

BUNN®

SLCC-6



ILLUSTRATED PARTS CATALOG

Designs, materials, weights, specifications, and dimensions for equipment or replacement parts are subject to change without notice.

BUNN-O-MATIC CORPORATION

POST OFFICE BOX 3227

SPRINGFIELD, ILLINOIS 62708-3227

PHONE: (217) 529-6601 FAX: (217) 529-6644



BUNN-O-MATIC COMMERCIAL PRODUCT WARRANTY

Bunn-O-Matic Corp. ("BUNN") warrants equipment manufactured by it as follows:

- 1) All equipment other than as specified below: 2 years parts and 1 year labor.
- 2) Electronic circuit and/or control boards: parts and labor for 3 years.
- 3) Compressors on refrigeration equipment: 5 years parts and 1 year labor.
- 4) Grinding burrs on coffee grinding equipment to grind coffee to meet original factory screen sieve analysis: parts and labor for 3 years or 30,000 pounds of coffee, whichever comes first.

These warranty periods run from the date of installation BUNN warrants that the equipment manufactured by it will be commercially free of defects in material and workmanship existing at the time of manufacture and appearing within the applicable warranty period. This warranty does not apply to any equipment, component or part that was not manufactured by BUNN or that, in BUNN's judgment, has been affected by misuse, neglect, alteration, improper installation or operation, improper maintenance or repair, damage or casualty. This warranty is conditioned on the Buyer 1) giving BUNN prompt notice of any claim to be made under this warranty by telephone at (217) 529-6601 or by writing to Post Office Box 3227, Springfield, Illinois 62708-3227; 2) if requested by BUNN, shipping the defective equipment prepaid to an authorized BUNN service location; and 3) receiving prior authorization from BUNN that the defective equipment is under warranty.

THE FOREGOING WARRANTY IS EXCLUSIVE AND IS IN LIEU OF ANY OTHER WARRANTY, WRITTEN OR ORAL, EXPRESS OR IMPLIED, INCLUDING, BUT NOT LIMITED TO, ANY IMPLIED WARRANTY OF EITHER MERCHANTABILITY OR FITNESS FOR A PARTICULAR PURPOSE. The agents, dealers or employees of BUNN are not authorized to make modifications to this warranty or to make additional warranties that are binding on BUNN. Accordingly, statements by such individuals, whether oral or written, do not constitute warranties and should not be relied upon.

If BUNN determines in its sole discretion that the equipment does not conform to the warranty, BUNN, at its exclusive option while the equipment is under warranty, shall either 1) provide at no charge replacement parts and/or labor (during the applicable parts and labor warranty periods specified above) to repair the defective components, provided that this repair is done by a BUNN Authorized Service Representative; or 2) shall replace the equipment or refund the purchase price for the equipment.

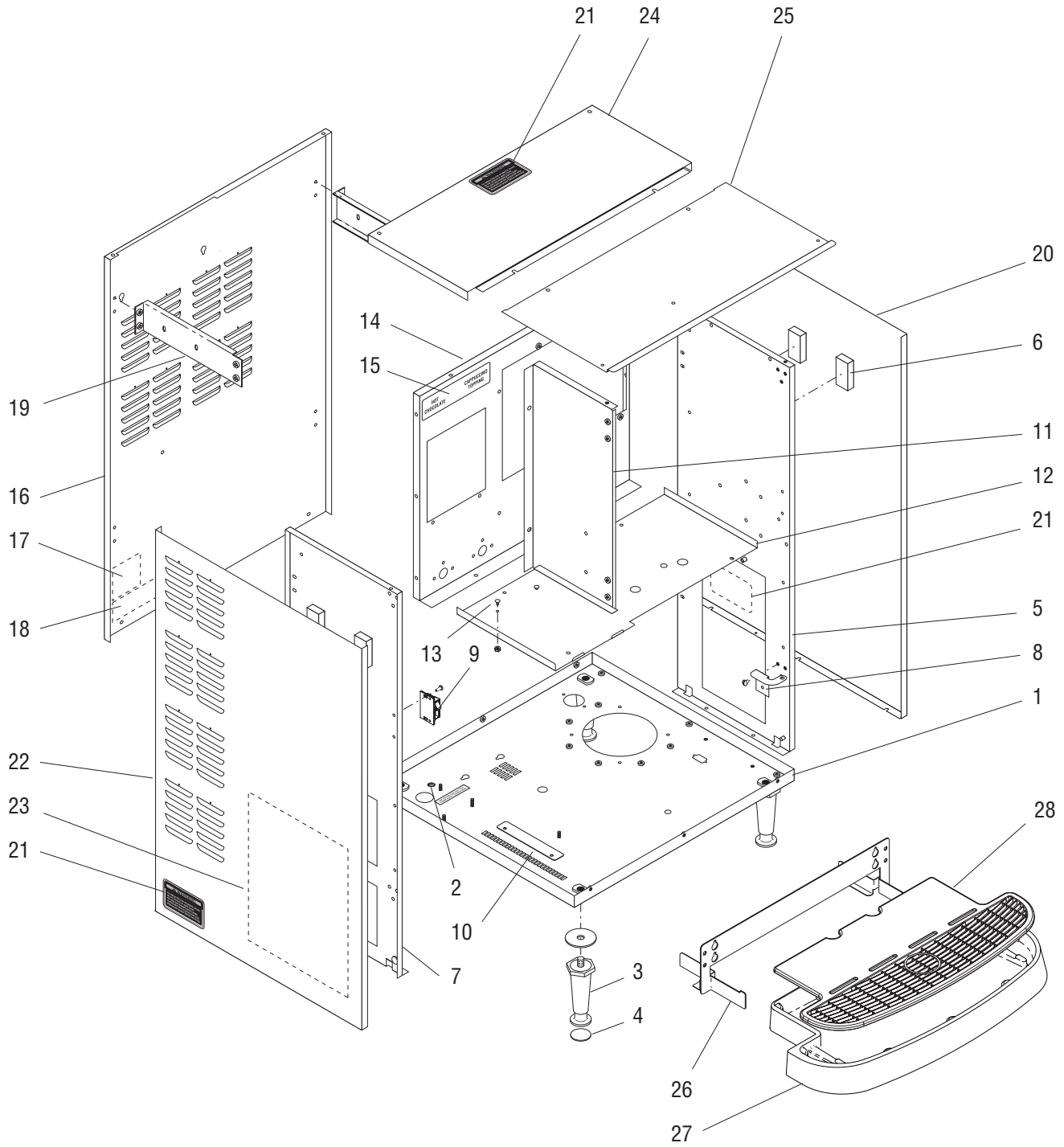
THE BUYER'S REMEDY AGAINST BUNN FOR THE BREACH OF ANY OBLIGATION ARISING OUT OF THE SALE OF THIS EQUIPMENT, WHETHER DERIVED FROM WARRANTY OR OTHERWISE, SHALL BE LIMITED, AT BUNN'S SOLE OPTION AS SPECIFIED HEREIN, TO REPAIR, REPLACEMENT OR REFUND.

In no event shall BUNN be liable for any other damage or loss, including, but not limited to, lost profits, lost sales, loss of use of equipment, claims of Buyer's customers, cost of capital, cost of down time, cost of substitute equipment, facilities or services, or any other special, incidental or consequential damages.

BrewWISE, BrewLOGIC, BrewMETER, BrewWIZARD, Bunn Gourmet, BUNN Gourmet Ice, BUNN Pour-O-Matic, BUNN, Bunn-OMatic, Bunn-O-Matic, BUNNlink, BUNNserve, BUNNSERVE, BUNN Espresso, Cool Froth, DBC, Dr. Brew, Dual, Easy-Clear, EasyGard, Easy Pour, FlavorGard, Gourmet Ice, Gourmet Juice, High Intensity, IMIX, Infusion Series, Intellisteam, Quality Beverage Equipment Worldwide, The Mark of Quality in Beverage Equipment Worldwide, My Café, PowerLogic, Safety-Fresh, Scale-Pro, Silver Series, Single, Smart Funnel, Smart Hopper, SmartWAVE, Soft Heat, SplashGard, System III, ThermoFresh, 392, AutoPOD, AXIOM, Beverage Profit Calculator, Beverage Bar Creator, BUNNsource, Coffee At Its Best, Digital Brewer Control, Nothing Brews Like a BUNN, Pouring Profits, Pulse Wave, Signature Series, Smart Heat, Tea At Its Best, The Horizontal Red Line, Titan, Ultra, are either trademarks or registered trademarks of Bunn-O-Matic Corporation.

TABLE OF CONTENTS

Covers, Panels & Drip Tray	4
Door Assembly	8
Cabinet Assembly	10
Cooling Fan & Air Duct.....	12
Pump Assembly.....	14
Water Inlet & Tank Drain	16
Tank Assembly.....	18
Dispense Valve and Lines.....	20
Auger Drive & Hopper Assy	22
Mixing/Whipper Chamber & Drive Motor.....	24
Electrical Components	26
Numerical Index.....	28



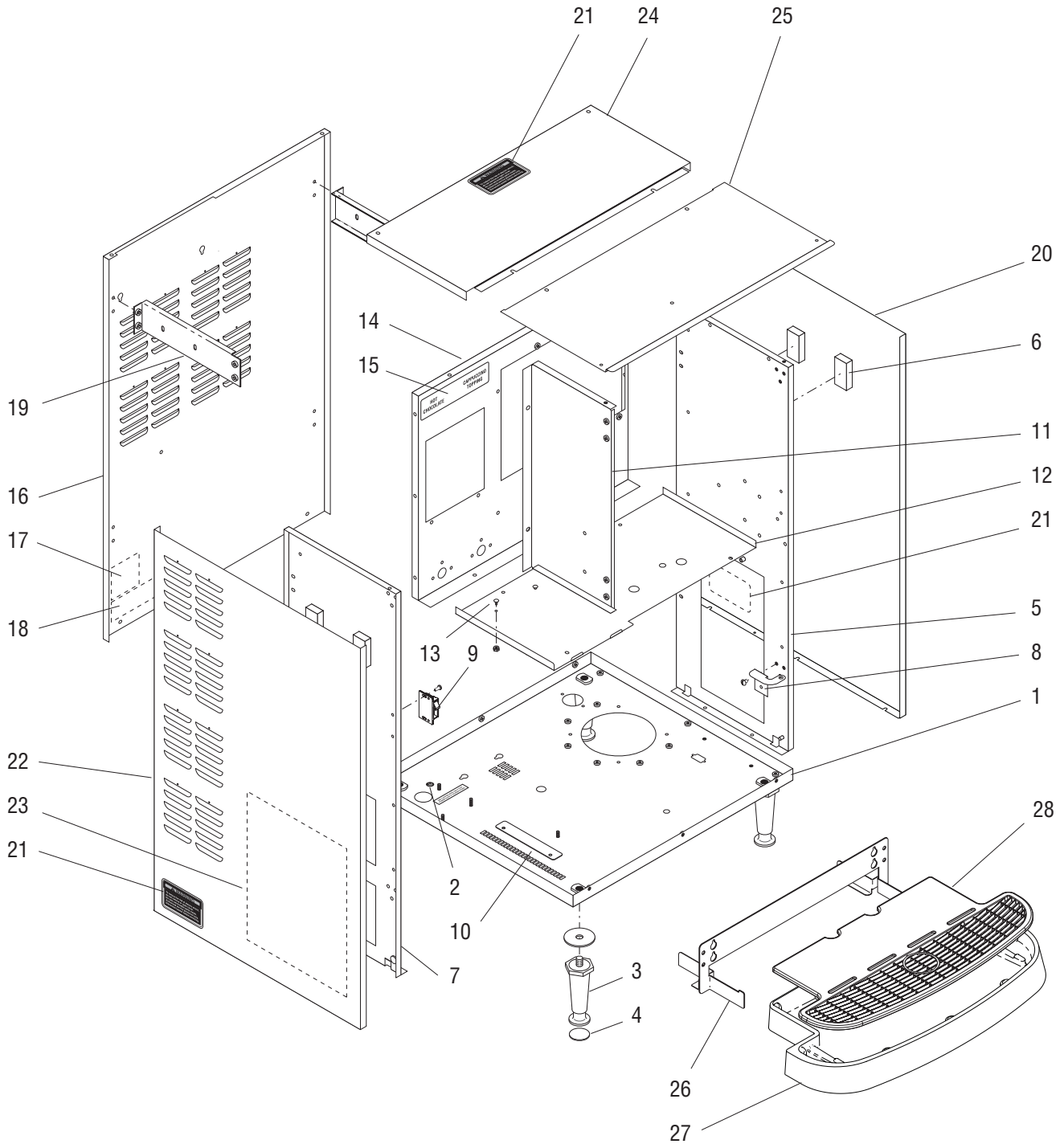
COVERS, PANELS AND DRIP TRAY

ITEM	PART NO.	QTY.	DESCRIPTION
1	38664.1002	1	Base w/Decals (Includes item 2)
2	00824.0000	1	Decal, Grounding Location
3	26528.0000	4	Leg, 4.0" Adjustable
	01526.0001	4	Washer
4	03996.0000	4	Pad, Anti Skid
5	38080.0000	1	Panel, Inner Right
	01311.0001	5	Screw, Truss Head Locking #8-32 x .25"
6	36896.0000	4	Pad
7	38082.0000	1	Panel, Inner Left
	01311.0001	5	Screw, Truss Head Locking #8-32 x .25"
8	36647.0001	1	Bracket, Hinge, Lower Right
	01311.0001	3	Screw, Truss Head Locking #8-32 x .25"
9	34666.0000	1	Catch, Door latch
	02336.0000	2	Screw, Truss Head #4-40 x .38"
10	39284.0000	1	Plate, Retainer
11	38668.0000	1	Panel, Center
	01311.0001	4	Screw, Truss Head Locking #8-32 x .25"
12	38084.0002	1	Platform, Hopper Mounting
	01311.0000	4	Screw, Truss Head #8-32 x .25"
13	20960.0000	2	Shoulder Screw
	00991.0002	2	Nut, Lock #6-32
14	38077.1003	1	Panel w/Decals, Inner Rear (Includes item 15)
15	39583.0000	1	Decal, Hopper Placement
16	38990.1001	1	Panel w/Decals, Rear (Includes items 17 & 18)
	01311.0003	11	Screw, Truss Head BLK #8-32 x .25"
17	00986.0000	1	Decal, Warning Electrical
18	00656.0000	1	Decal, Comply to Plumbing
19	35926.0000	4	Bracket, Side Support
	01311.0001	8	Screw, Truss Head Locking #8-32 x .25"
20	35912.1001	1	Panel w/Decals, Right Side (Includes item 21)
	01311.0003	3	Screw, Truss Head BLK #8-32 x .25"
21	37881.0000	3	Decal, No Serviceable Parts
22	35912.1004	1	Panel w/Decals, Left Side (Includes items 21 & 23)
	01311.0003	3	Screw, Truss Head BLK #8-32 x .25"
23	39318.0002	1	Schematic, Electrical
24	35916.1002	1	Panel w/Decals, Top Rear (Includes item 21)
	01311.0003	2	Screw, Truss Head BLK #8-32 x .25"

(Continued)

* Indicates the part number listed is for reference only. See DESCRIPTION for possible service replacement.

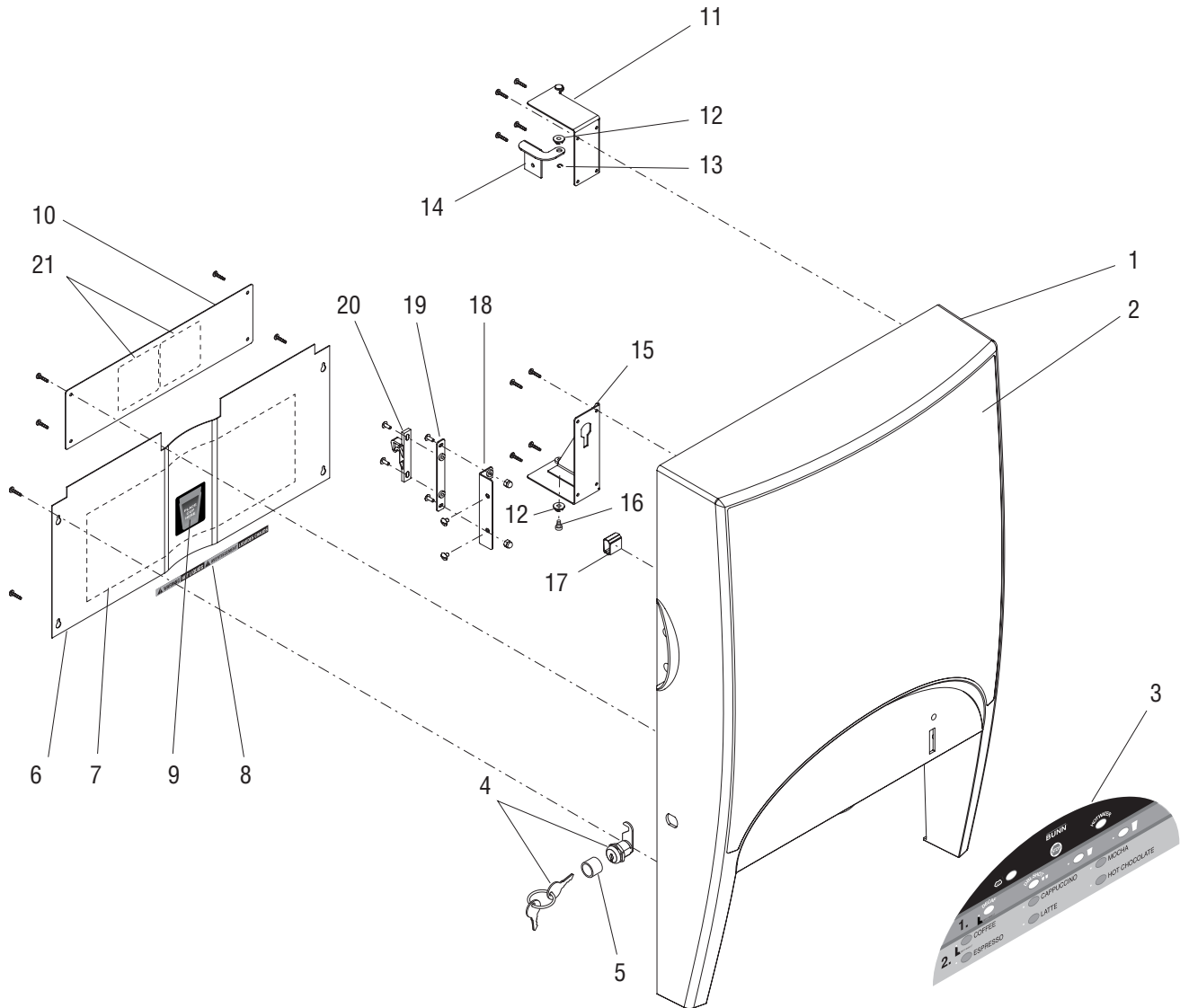
(Continued)



COVERS, PANELS AND DRIP TRAY

ITEM	PART NO.	QTY.	DESCRIPTION
25	35915.1002	1	Panel, Top Front
	01382.0002	2	Screw, Truss Head BLK #6-32 x .38"
	01311.0003	3	Screw, Truss Head BLK #8-32 x .25"
26	37065.0001	1	Bracket, Drip Tray
27	36670.0000	1	Drip Tray Assy
28	39308.1000	1	Cover, Drip Tray

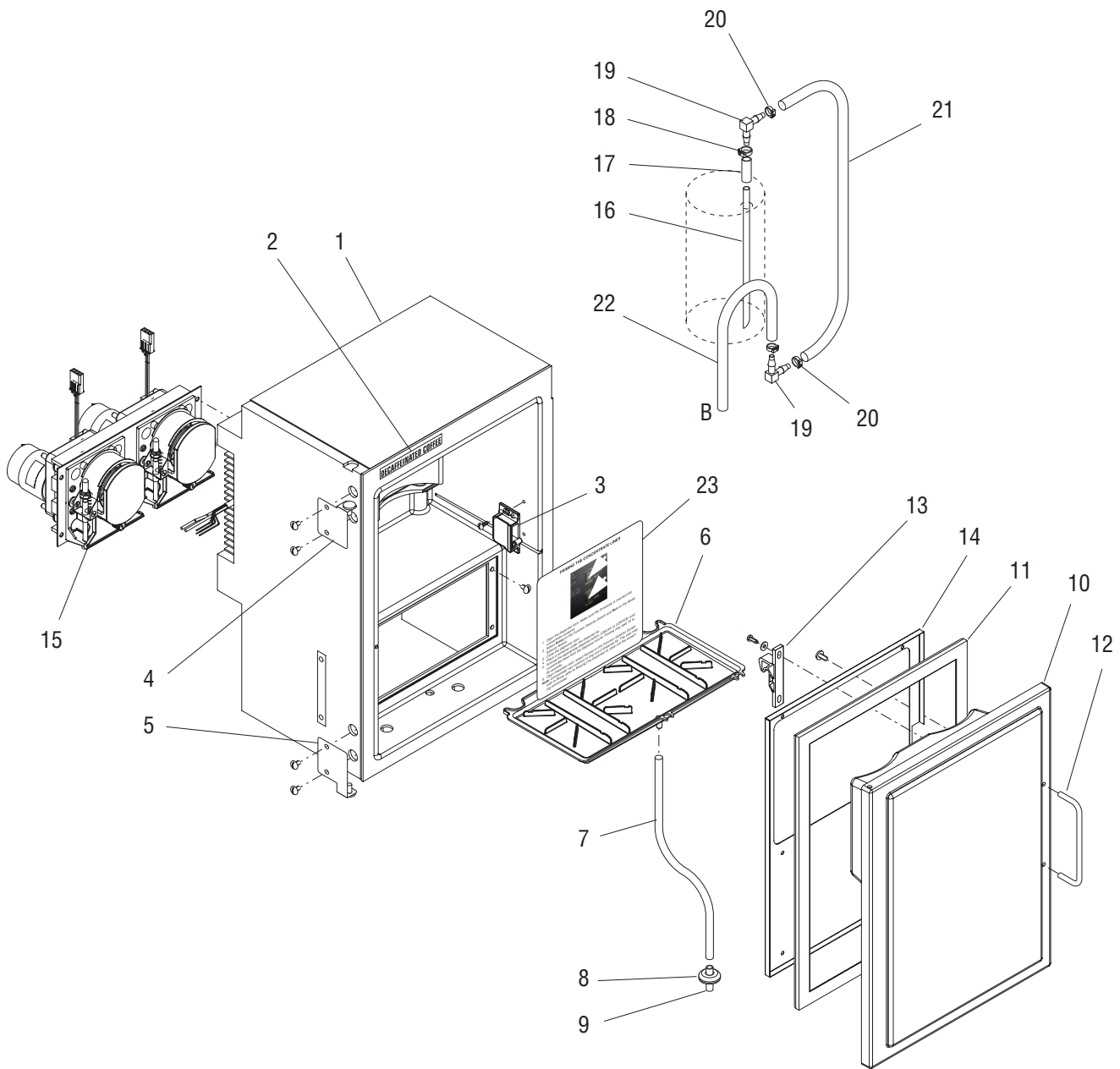
* Indicates the part number listed is for reference only. See DESCRIPTION for possible service replacement.



DOOR ASSEMBLY

ITEM	PART NO.	QTY.	DESCRIPTION
-	39041.1000	1	Door Assembly (Includes items 1 - 21)
1	38933.0000	1	Door
2	39167.0000	1	Decal, Door
3	39258.0000	1	Membrane Switch
4	34472.1001	1	Lock Assy (Includes Keys)
	28095.0000	1	Keys (Set of 2)
5	35052.0002*	1	Tube, Silicone
6	39030.0000	1	Splash Panel
	01360.0001	4	Screw, Pan Head #6 x .60"
7	39479.0000	1	Decal, Cleaning
8	11646.0002	1	Decal, Warning - Hot Liquids
9	39474.0000	1	Decal, Cup Placement
10	39040.1000	1	Panel, Inner Access (Includes item 21)
	01360.0001	4	Screw, Pan Head #6 x .60"
11	39034.0000	1	Bracket, Upper Door
	01360.0001	4	Screw, Pan Head #6 x .60"
12	34362.0000	2	Bushing
13	01403.0000	1	E-ring
14	36647.0001	1	Bracket, Hinge
	01311.0001	3	Screw, Truss Head Locking #8-32 x .25"
15	39033.0000	1	Bracket, Lower Door
	01360.0001	4	Screw, Pan Head #6 x .60"
16	24457.0002	1	Screw, Shoulder
17	35260.0000	1	Cable Mount (Door Cable)
18	39036.0000	1	Bracket, Latch
	01347.0000	2	Screw, Truss Head #6-32 x .38"
	24224.0000	2	Nut, Acorn #6-32
19	39038.0000	1	Plate, Latch
	01347.0000	2	Screw, Truss Head #6-32 x .38"
20	34667.0000	1	Keeper, Door Latch
	01311.0005	2	Screw, Truss Head BLK #8-32 x .38"
21	40054.0000	1	Decal, Air Filter

* Indicates the part number listed is for reference only. See DESCRIPTION for possible service replacement.



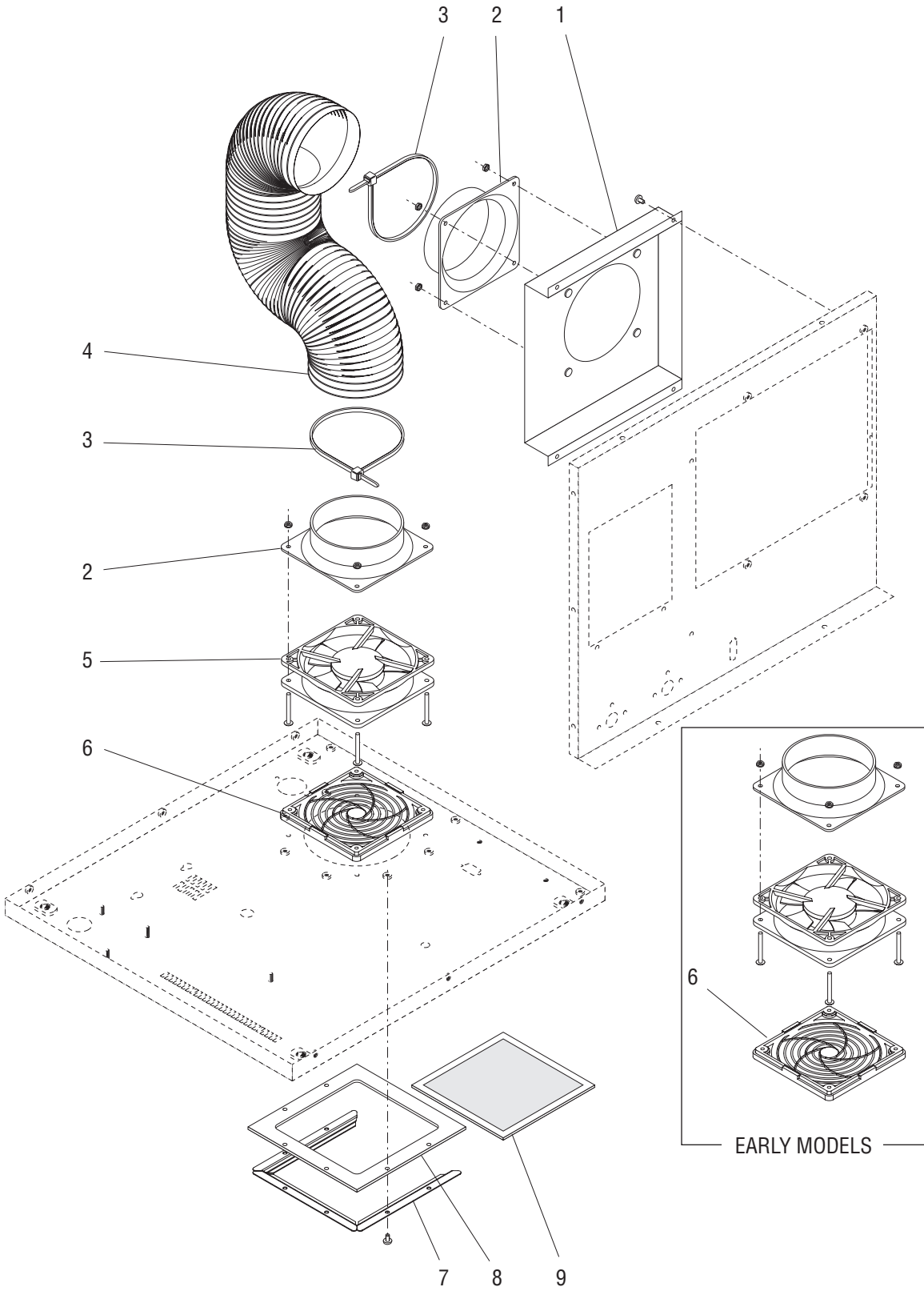
NOTE: Letters appearing within this illustration correspond to matching connections in other illustrations.

P3809.50

CABINET ASSEMBLY

ITEM	PART NO.	QTY.	DESCRIPTION
1	39277.1000	1	Cabinet Assy (Includes item 2)
	01311.0001	4	Screw, Truss Head, Locking #8-32 x .25"
2	00879.0000	1	Decal, Decaffeinated Coffee
3	34666.0001	1	Catch, Door Latch
	02336.0000	2	Screw, Truss Head #4-40 x .38"
4	38396.0001	1	Bracket, Upper Door
	01311.0001	2	Screw, Truss Head, Locking #8-32 x .25"
5	38396.0002	1	Bracket, Lower Door
	01311.0001	2	Screw, Truss Head, Locking #8-32 x .25"
6	38687.0000	1	Drip Pan, Product Shelf
7	34729.1004	1	Tube, Norprene .187" ID x 20.0"
8	39015.0000	1	Grommet
9	21800.0015	1	Tube SST
10	39660.1000	1	Door Assy, Chiller (Includes items 11 - 14)
11	34150.0001	1	Gasket, Door
12	23954.0000	1	Handle
	01359.0000	2	Screw, Flat Head #8-32 x .38"
13	34667.0000	1	Keeper, Door Latch
	01521.0000	2	Washer
	01360.0002	2	Screw, Pan Head #6 x .375"
14	39652.0000	1	Panel, Gasket Retainer
	01360.0002	6	Screw, Pan Head #6 x .375"
15	-----	1	Pump Assy. (See PUMP ASSEMBLY)
	01311.0001	4	Screw, Truss Head, Locking #8-32 x .25"
16	36017.1000	1	Tube Assy (Includes items 17 - 19)
17	36629.0002	1	Tube, Silicone .188" ID x 1.5"
18	12422.0011	1	Clamp, Hose .40 - .45"
19	34714.0000	2	Elbow .188" Sngl Barb
20	12422.0003	3	Clamp, Hose .34 - .39"
21	34729.1001	1	Tube, Norprene .187" ID x 14.0"
22	34729.1003	1	Tube, Norprene .187" ID x 9.13"
23	41744.0000	1	Decal, Prime concentrate Lines
24	37500.0201	-	Tube Kit (Includes items 16 - 22)

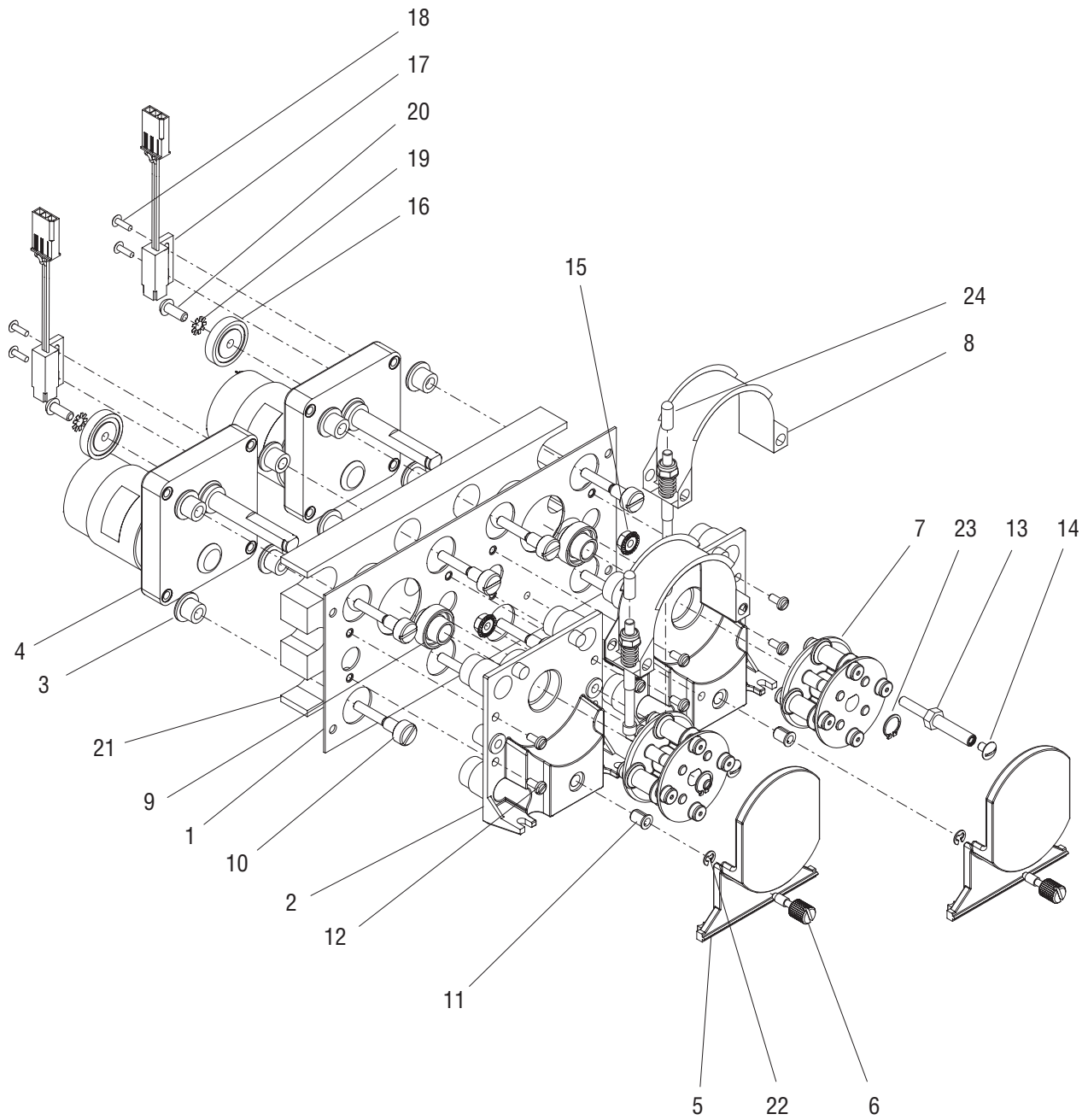
* Indicates the part number listed is for reference only. See DESCRIPTION for possible service replacement.



COOLING FAN & DUCT

ITEM	PART NO.	QTY.	DESCRIPTION
1	39287.0000	1	Panel, Fan Shroud
	01311.0001	4	Screw, Truss Head Locking #8-32 x .25"
2	38808.0000	2	Adapter
	00970.0000	8	Nut, Keps #8-32
3	32734.0000	2	Tie, Cable
4	38811.0000	1	Duct, 4.0"
5	33297.0001	1	Fan Assy
	39458.0000	4	Screw, Flat Head #8-32 x 2.0"
6	39307.0000	1	Filter Assy (Early Models)
	41415.0000	1	Fan Guard (Late Models)
7	41263.0000	3	Bracket
	01315.0000	6	Screw, Truss Head #8-32 x .38"
8	41264.0000	1	Spacer
9	35833.0000	1	Filter

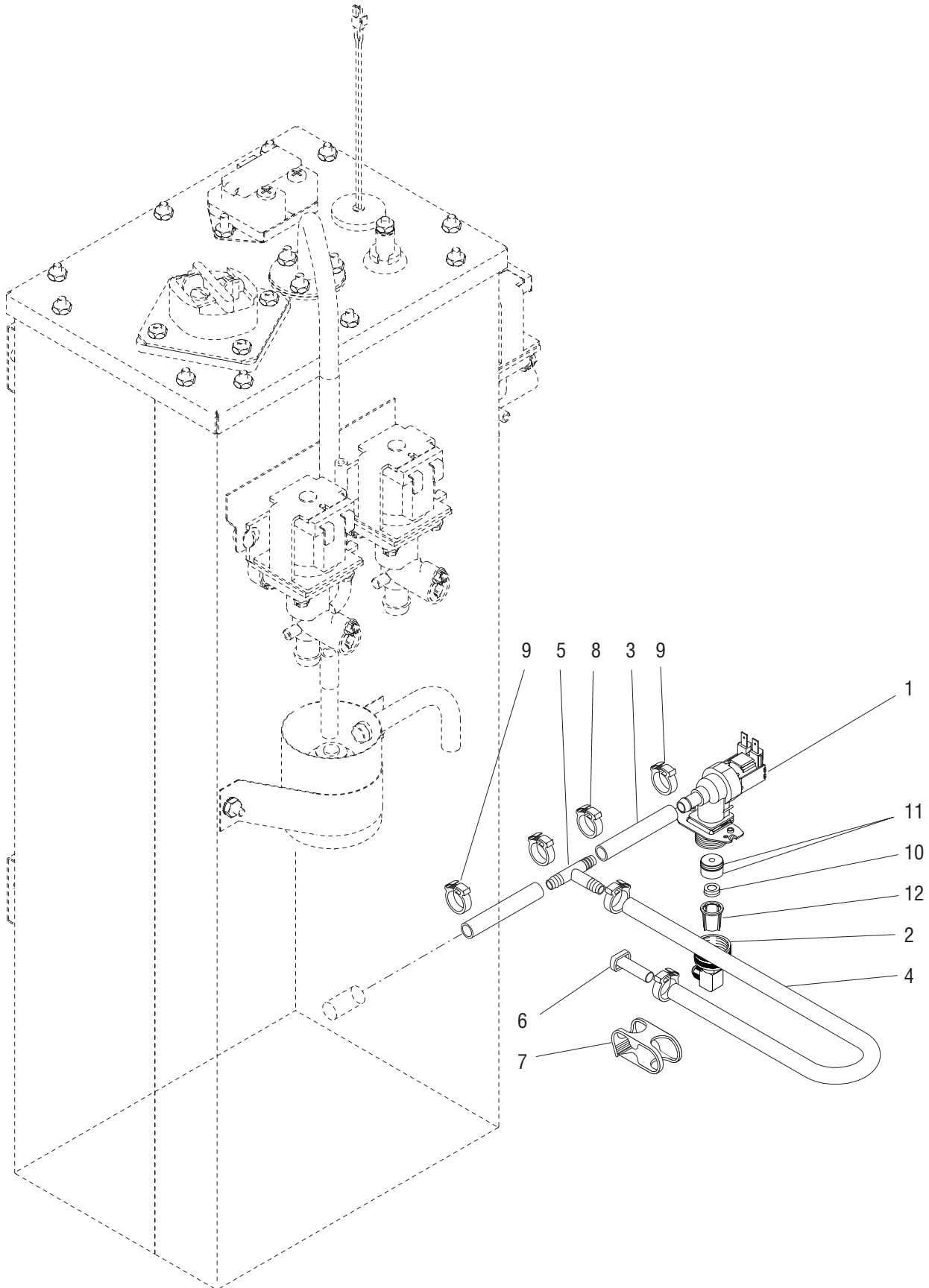
* Indicates the part number listed is for reference only. See DESCRIPTION for possible service replacement.



PUMP ASSEMBLY

ITEM	PART NO.	QTY.	DESCRIPTION
-	39286.1000	1	Pump Assy (Includes items 1 thru 25)
1	38683.0000	1	Bracket, Dual Pump
2	34166.0001	2	Block, Pump
3	32957.0000	8	Bushing
4	34536.0001	2	Motor, Gear 24VDC
5	34167.0000	2	Cover, Pump Block
6	34997.0000	2	Screw, Captive #10-32 X .625"
7	32706.1000	2	Rotor Assy
8	40037.1000	2	Compression Band Assy.
9	33825.0000	2	Bearing, Sleeve-Pump Assy
10	32927.0000	8	Screw, Shoulder #10-32 UNF
11	32928.0000	2	Insert, Threaded #10-32
12	02328.0003	8	Screw, Pan Head #6-32 x .312"
13	32609.0000	2	Standoff, Pump Band
14	01311.0001	2	Screw, Truss Head Locking #8-32 x .25"
15	34765.0000	2	Nut, Flanged #10-32
16	32654.0000	2	Magnet Hub
17	33608.1000	2	Sensor Assy, RPM
18	02336.0000	4	Screw, Truss Head #4-40 x .38"
19	01512.0000	2	Lockwasher, Ext - tooth #10
20	01331.0004	2	Screw, Round Head Locking #10-32 x .5"
21	39293.0000	1	Insulation, Pump
22	34998.0000	2	E-ring, Retaining
23	32652.0000	2	Retaining Ring
24	12919.0009	2	Cap
25	M2531.0000	-	Sealant Compound, DOW 111 (Not Illustrated)

* Indicates the part number listed is for reference only. See DESCRIPTION for possible service replacement.

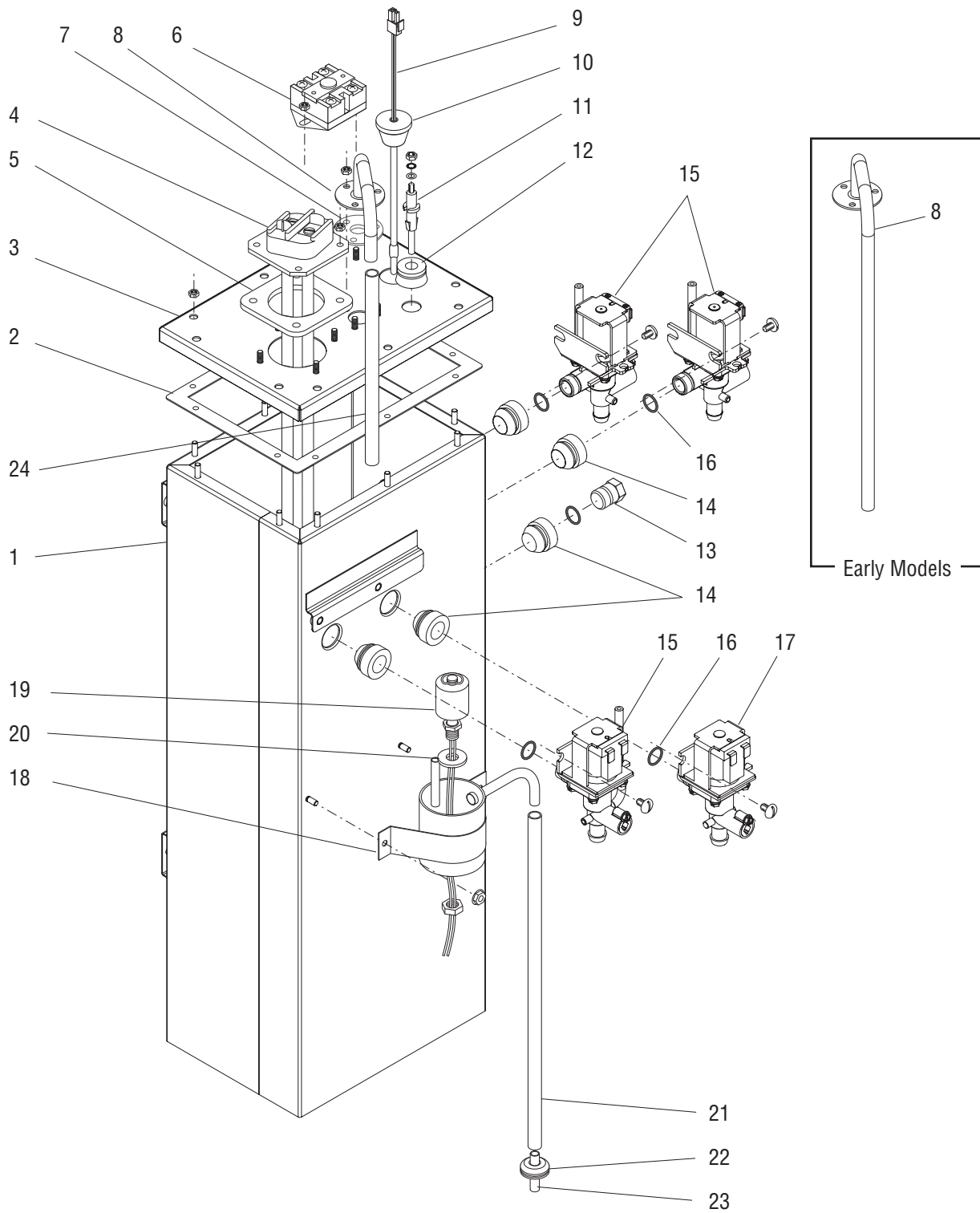


P3812.70

WATER INLET & TANK DRAIN

ITEM	PART NO.	QTY.	DESCRIPTION
1	40506.0004	1	Valve, Water Inlet
	32283.0000	2	Screw, Pan Head M4 x 6mm
2	37297.0000	1	Fitting, Elbow .75" x .25" Flare
3	20976.0014*	2	Tube, Silicone .38" ID x 3.25" (Order item 13)
4	20976.0000*	1	Tube, Silicone .38" ID x 30.0" (Order item 13)
5	38948.0000	1	Tee .50" Barb
6	34392.0000	1	Plug, Hose
7	11630.0001	1	Clamp, Shut Off
8	12422.0005	4	Clamp, Hose .62 - .71"
9	12422.0001	2	Clamp, Hose .59 - .66"
10	37856.0750	1	Flow Regulator
11	40056.0001	1	Flow Control
	33725.0000	1	O-ring
12	-----	1	Screen (Order item 1)
13	20976.1000	-	Tube, Silicone .38" ID x 12.0" (Use as required)
	20976.1001	-	Tube, Silicone .38" ID x 36.0" (Use as required)
	20976.1002	-	Tube, Silicone .38" ID x 120.0" (Use as required)

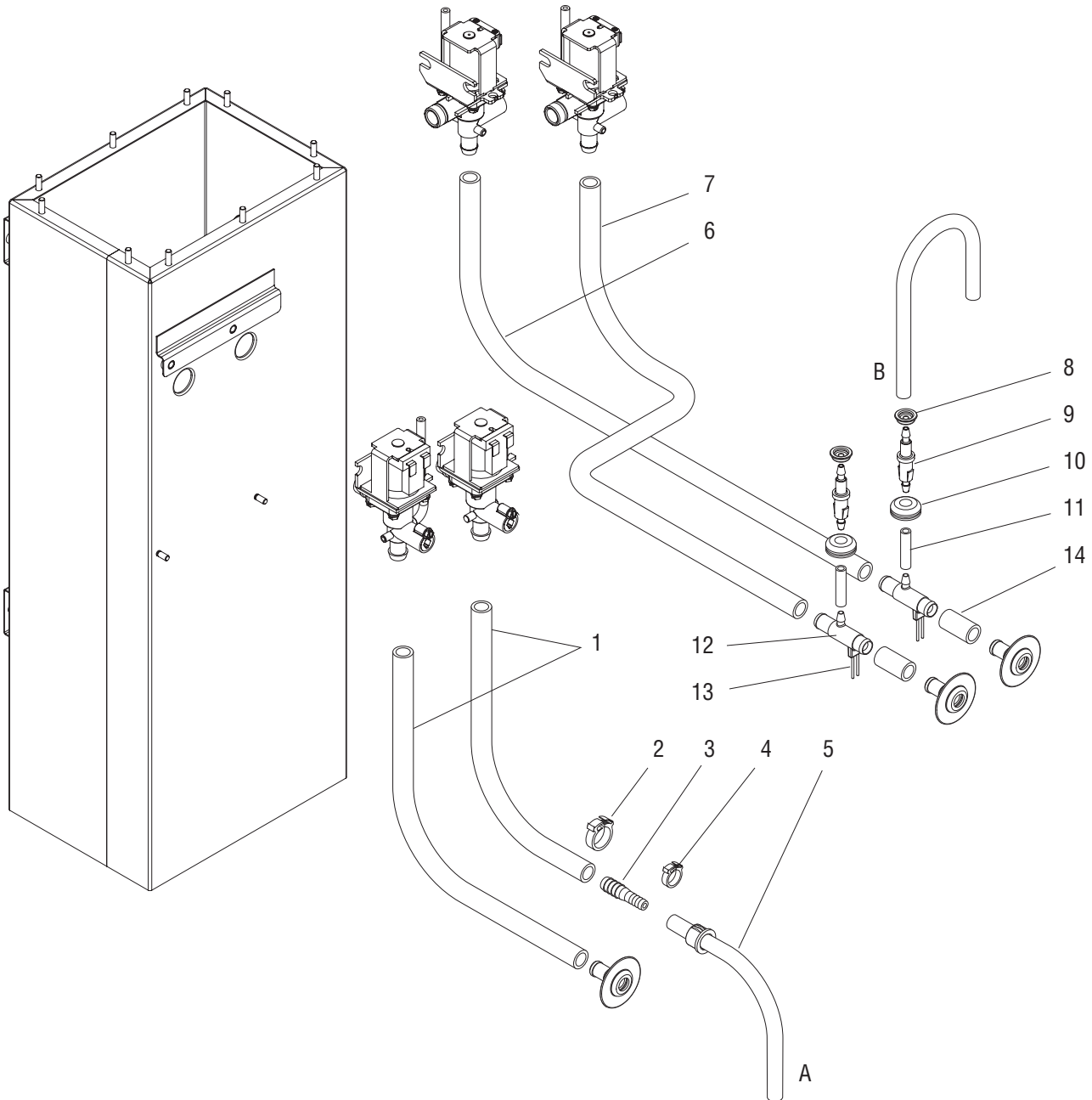
* Indicates the part number listed is for reference only. See DESCRIPTION for possible service replacement.



TANK ASSEMBLY

ITEM	PART NO.	QTY.	DESCRIPTION
1	37978.1002	1	Tank
	01311.0001	3	Screw, Truss Head Locking #8-32 x .25"
2	22978.0000	1	Gasket, Tank Lid
3	28281.0003	1	Lid, Tank
	00908.0000	10	Nut, Hex #8-32
4	33926.1000	1	Tank Heater 6000W (Includes item 5)
	00908.0000	4	Nut, Hex #8-32
5	12398.0002	1	Gasket, Tank Heater
6	23717.0003	1	Limit Thermostat
	00908.0000	2	Nut, Hex #8-32
7	05515.0000	1	Gasket, Overflow Tube
8	28292.0002	1	Tube, Overflow (Early Models)
	28292.0003	1	Tube, Overflow (Late Models)
	00908.0000	3	Nut, Hex #8-32
9	28891.1008	1	Probe, Temperature & Dry Plug
10	33801.0001	1	Grommet
11	20936.1000	1	Probe, Liquid Level (Includes hardware below)
	01501.0000	1	Washer
	20203.0100	1	Lockwasher, Internal-Tooth #8
	00908.0000	1	Nut, Hex #8-32
12	38114.0000	1	Grommet
13	26369.0000	1	Plug (Late Models)
14	37970.0000	5	Grommet
15	39285.1000	3	Valve Assy, Vented (Each includes item 16)
	01326.0000	3	Screw, Truss Head #10-32 x .25"
16	24733.0011	5	O-ring
17	39316.1000	1	Valve Assy (Includes item 16)
	01326.0000	1	Screw, Truss Head #10-32 x .25"
18	12552.0000	1	Cup, Overflow (Early Models)
	12552.0003	1	Cup, Overflow (Late Models)
	00970.0000	2	Nut, Keps #8-32
19	03803.0002	1	Switch, Level (Includes item 20)
	00946.0000	1	Nut, Hex Brass
20	03633.0000	1	Gasket
21	28526.0002*	1	Tube, Silicone .38" ID x 16.0" (Order item 25)
22	02536.0000	1	Grommet
23	21801.0002	1	Tube SST
24	28526.0036*	1	Tube, Silicone .38" ID x 9.5" (Order item 25)(Late Models)
25	28526.1000	-	Tube, Silicone .38" ID x 12.0" (Use as required)
	28526.1001	-	Tube, Silicone .38" ID x 36.0" (Use as required)
	28526.1002	-	Tube, Silicone .38" ID x 60.0" (Use as required)
	28526.1003	-	Tube, Silicone .38" ID x 120.0" (Use as required)

* Indicates the part number listed is for reference only. See DESCRIPTION for possible service replacement.



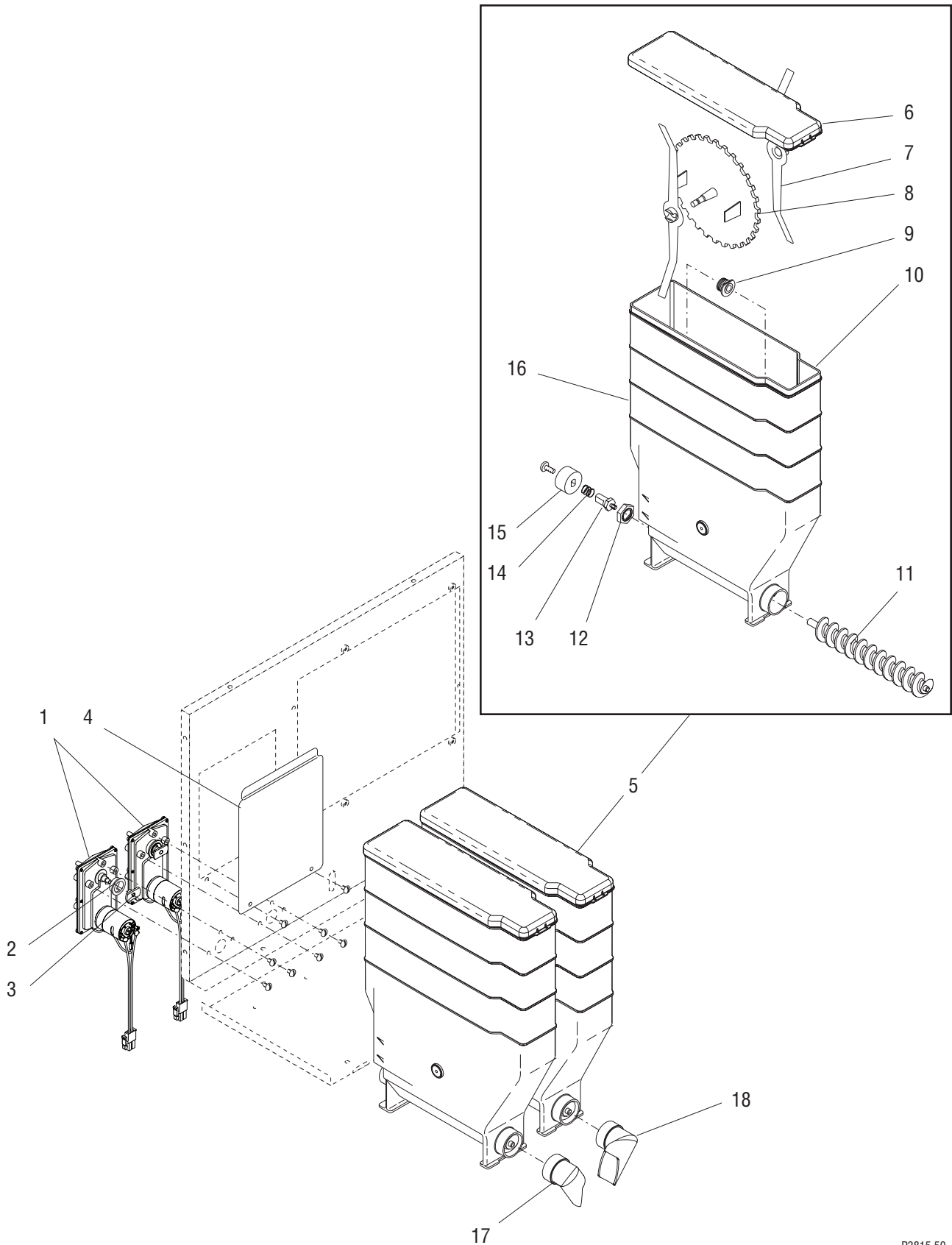
P3814.70

NOTE: Letters appearing within this illustration correspond to matching connections in other illustrations.

DISPENSE VALVES & LINES

ITEM	PART NO.	QTY.	DESCRIPTION
1	28526.0023*	2	Tube, Silicone .313" ID x 17.0" (Order item 15)
2	12422.0001	1	Clamp, Hose .59 - .66"
3	26443.0001	1	Reducer, Hose .38" x .25" Barb
4	12422.0000	1	Clamp, Hose .47 - .54"
5	11707.0020*	1	Tube, Silicone .25" ID x 7.25" (Order item 16)
6	28526.0030*	1	Tube, Silicone .313" ID x 17.4" (Order item 15)
7	28526.0002*	1	Tube, Silicone .313" ID x 16.0" (Order item 15)
8	38741.0000	2	Grommet
9	38996.0000	2	Tube Connector
10	02536.0000	2	Grommet
11	36629.0003*	1	Tube, Silicone .188" ID x 1.25" (Order item 17)
12	38995.0000	2	Manifold
13	34689.0000	4	Pin
14	20976.0077*	2	Tube, Silicone .38" ID x 1.10" (Order item 18)
15	28526.1000	-	Tube, Silicone .313" ID x 12.0" (Use as required)
	28526.1001	-	Tube, Silicone .313" ID x 36.0" (Use as required)
	28526.1002	-	Tube, Silicone .313" ID x 60.0" (Use as required)
	28526.1003	-	Tube, Silicone .313" ID x 120.0" (Use as required)
16	11707.1000	-	Tube, Silicone .25" ID x 12.0" (Use as required)
	11707.1001	-	Tube, Silicone .25" ID x 36.0" (Use as required)
	11707.1002	-	Tube, Silicone .25" ID x 120.0" (Use as required)
17	36629.0001	-	Tube, Silicone .188" ID x 2.5" (Use as required)
18	20976.1000	-	Tube, Silicone .38" ID x 12.0" (Use as required)
	20976.1001	-	Tube, Silicone .38" ID x 36.0" (Use as required)
	20976.1002	-	Tube, Silicone .38" ID x 120.0" (Use as required)

* Indicates the part number listed is for reference only. See DESCRIPTION for possible service replacement.

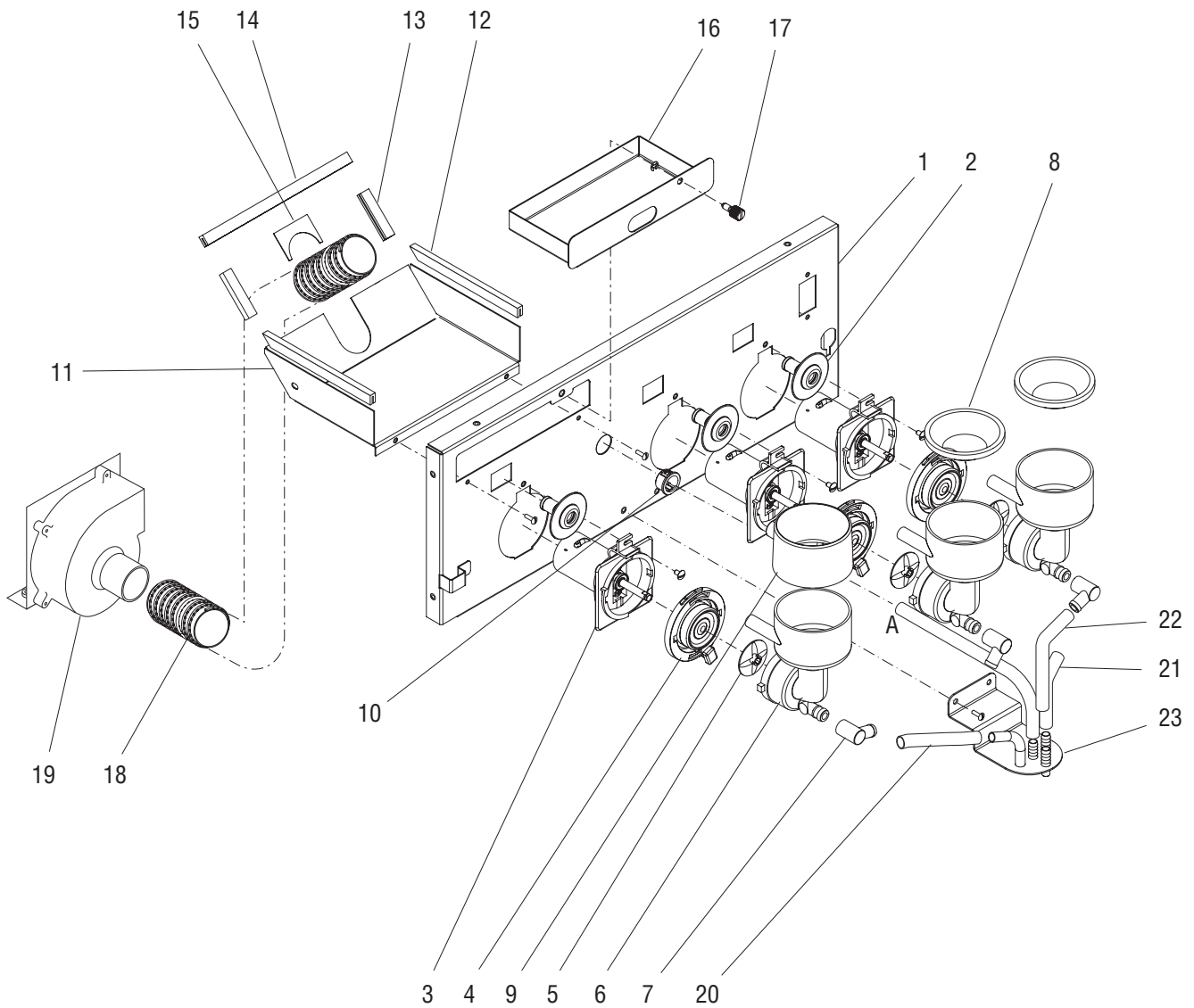


P3815.50

AUGER DRIVE & HOPPER ASSY.

ITEM	PART NO.	QTY.	DESCRIPTION
1	37037.0001	2	Gearmotor Assy (Includes items 2 & 3)
	01311.0000	6	Screw, Truss Head #8-32 x .25"
2	26401.0000	2	Dust Seal
3	36773.0000	2	Drive Plate
4	38701.0000	1	Panel, Inner Access
	01311.0000	2	Screw, Truss Head #8-32 x .25"
5	37010.1002	2	Hopper Assy (Each includes items 6 - 16)
6	36653.0001	1	Lid, Hopper
7	32337.0000	2	Mixing Blade
8	32386.0001	1	Disk, Agitator (30 Tooth)
9	28067.0000	1	Bushing, Auger Drive Shaft
10	37011.0001	1	Hopper
11	38330.0000	1	Auger
12	25743.0000	1	Locknut
13	37539.1000	1	Shaft, Hopper Drive (Includes item 16)
14	36774.0000	1	Spring
15	36770.0000	1	Coupling, Auger Drive
16	01326.0002	1	Screw, Truss Head Locking #10-32 x .312"
17	39263.0000	1	Elbow, Ejector Left
18	39263.0001	1	Elbow, Ejector Right

* Indicates the part number listed is for reference only. See DESCRIPTION for possible service replacement.

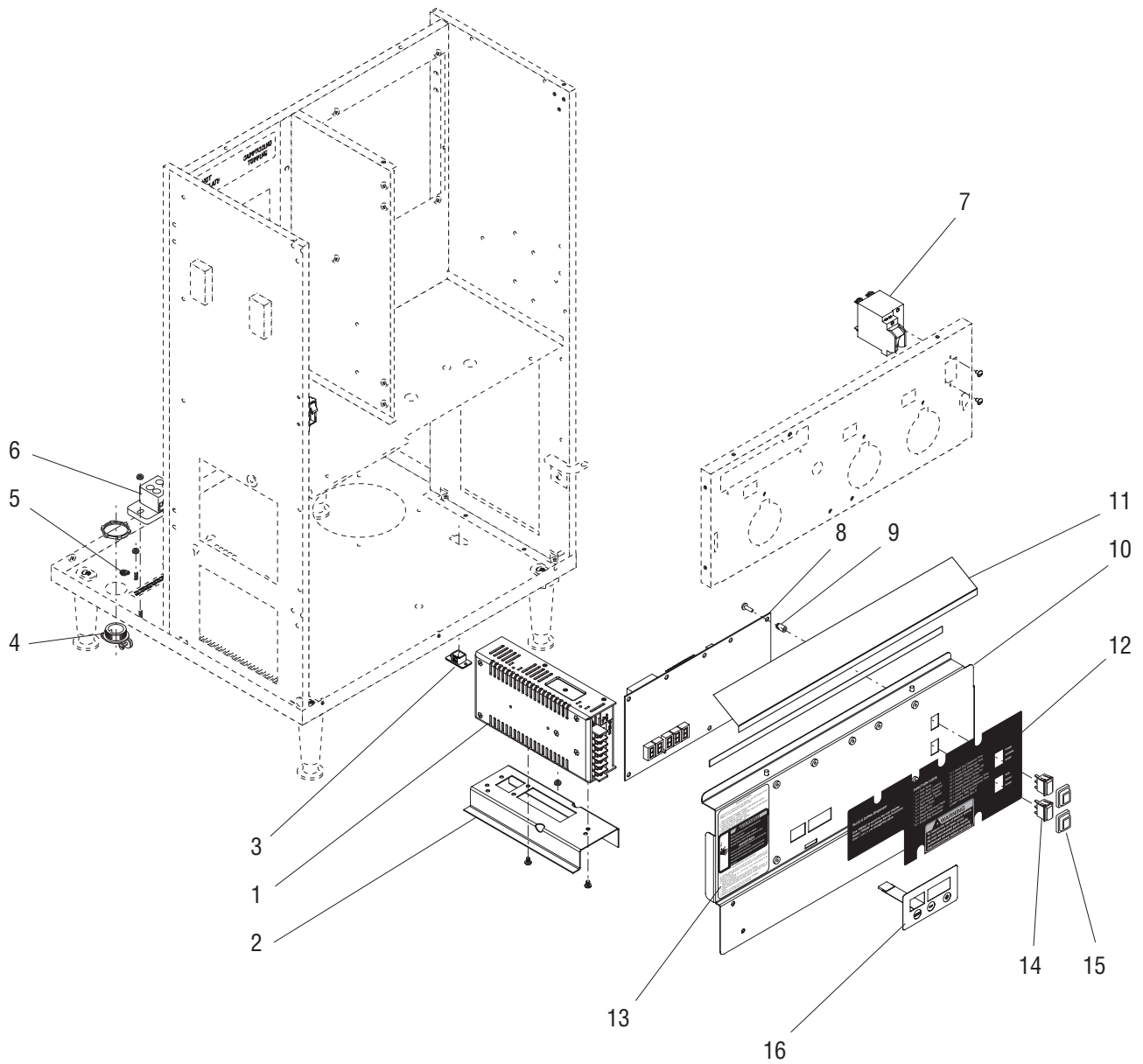


NOTE: Letters appearing within this illustration correspond to matching connections in other illustrations.

MIXING/WHIPPER CHAMBER & DRIVE MOTOR

ITEM	PART NO.	QTY.	DESCRIPTION
1	38089.0004	1	Panel, Whipper
	01311.0001	5	Screw, Truss Head Locking #8-32 x .25"
2	39315.0000	3	Fitting, Water Inlet
3	39309.0000	3	Motor, Whipper
	01308.0000	3	Screw, Truss Head #6-32 x .25"
4	39313.0000	3	Base, Whipper Chamber (Includes O-ring & Shaft Seal)
5	39314.0000	3	Impeller
6	39311.0000	3	Whipper Chamber
7	39312.0000	3	Fitting, Outlet
8	39552.0000	2	Trap, Condensation
9	39310.0000	1	Steam Collector
10	07070.0000	1	Bushing, Snap
11	38086.0002	1	Shelf
	02336.0000	2	Screw, Truss Head #4-40 x .38"
12	02434.0014*	2	Gasket, U-channel 4.85" (Order item 24)
13	02434.0017*	2	Gasket, U-channel 1.67" (Order item 24)
14	02434.0016*	1	Gasket, U-channel 6.50" (Order item 24)
15	38345.0000	1	Plate, Filler
16	38087.0002	1	Tray
17	37988.0000	1	Screw, Captive #10-32 x .50"
	34998.0000	1	E-ring
18	28297.0000	1	Hose, Vacuum
19	39507.1000	1	Fan, Blower DV
	39507.1001	1	Fan, Blower 120V
	39507.1002	1	Fan, Blower 208-240V
	01311.0001	2	Screw, Truss Head Locking #8-32 x .25"
20	11707.0048*	1	Tube, Silicone .25" ID x 4.0" (Order item 25)
21	11707.0046*	1	Tube, Silicone .25" ID x 2.5" (Order item 25)
22	11707.0047*	1	Tube, Silicone .25" ID x 6.5" (Order item 25)
23	38096.0002	1	Bracket, Beverage Outlet
	01311.0001	2	Screw, Truss Head Locking #8-32 x .25"
24	02434.1000	-	Gasket, U-channel 18.0" (Use as required)
	02434.1001	-	Gasket, U-channel 36.0" (Use as required)
25	11707.1000	-	Tube, Silicone .25" ID x 12.0" (Use as required)
	11707.1001	-	Tube, Silicone .25" ID x 36.0" (Use as required)
	11707.1002	-	Tube, Silicone .25" ID x 120.0" (Use as required)

* Indicates the part number listed is for reference only. See DESCRIPTION for possible service replacement.



ELECTRICAL COMPONENTS

ITEM	PART NO.	QTY.	DESCRIPTION
1	33363.0002	1	Power Supply Module
	32283.0000	2	Screw, Pan Head M4 x 6mm
2	34345.0000	1	Bracket
	00970.0000	1	Nut, Keps #8-32
3	36398.0000	1	Plug, DB-9
4	01590.0000	1	Cable Connector
5	00970.0000	1	Nut, Keps #8-32 (Grounding)
6	01106.0000	1	Terminal Block
	00970.0000	2	Nut, Keps #8-32
7	38894.0001	1	Switch
	01308.0000	2	Screw, Truss Head #6-32 x .25"
8	39044.1001	1	Circuit Board
	01390.0000	8	Screw, Round Head #8-32 x .625"
9	29081.0001	8	Spacer
10	36224.1001	1	Panel w/Decals, Lower Control (Includes items 12 & 13)
	01311.0001	2	Screw, Truss Head Locking #8-32 x .25" (Drip Tray Mounting)
	01311.0000	2	Screw, Truss Head #8-32 x .25"
11	39551.1000	1	Drip Shield (Includes Adhesive Foam Tape)
12	39280.0000	1	Decal, Main Panel
13	39591.0000	1	Decal, Rinse Alarm
14	27437.0001	2	Switch
15	34390.0000	2	Cap, Rocker Switch
16	39141.0000	1	Membrane Switch

The following items are not illustrated:

17	35260.0000	1	Cable Mount
18	12919.0000	1	Cap, Harness at Blower Motor
19	39291.0000	1	Wiring Harness, Main
20	39292.0001	1	Wiring Harness, Door Interconnect
	40021.0000	1	Decal, Wiring Harness - This Side Up
21	01666.0000	2	Bushing, Strain Relief (Door Harness)
22	39317.0000	1	Wiring Harness, Pumps
23	20630.0005	1	Power Cord (120V Models)

* Indicates the part number listed is for reference only. See DESCRIPTION for possible service replacement.

NUMERICAL INDEX

PART NO.	PAGE NO.	PART NO.	PAGE NO.	PART NO.	PAGE NO.	PART NO.	PAGE NO.
00656.0000	5	12422.0001	17,21	32927.0000	15	37500.0201	11
00824.0000	5	12422.0003	11	32928.0000	15	37539.1000	23
00879.0000	11	12422.0005	17	32957.0000	15	37856.0750	17
00908.0000	19	12422.0011	11	33297.0001	13	37881.0000	5
00946.0000	19	12552.0000	19	33363.0002	27	37970.0000	19
00970.0000	13,19,27	12552.0003	19	33608.1000	15	37978.1002	19
00986.0000	5	12919.0000	27	33725.0000	17	37988.0000	25
00991.0002	5	12919.0009	15	33801.0001	19	38077.1003	5
01106.0000	27	20203.0100	19	33825.0000	15	38080.0000	5
01308.0000	25,27	20630.0005	27	33926.1000	19	38082.0000	5
01311.0000	5,23,27	20936.1000	19	34150.0001	11	38084.0002	5
01311.0001	5,9,11,13	20960.0000	5	34166.0001	15	38086.0002	25
01311.0001	15,19,25,27	20976.0000	17	34167.0000	15	38087.0002	25
01311.0003	5,7	20976.0014	17	34345.0000	27	38089.0004	25
01315.0000	13	20976.0077	21	34362.0000	9	38096.0002	25
01315.0005	9	20976.1000	17,21	34390.0000	27	38114.0000	19
01326.0000	19	20976.1001	17,21	34392.0000	17	38330.0000	23
01326.0002	23	20976.1002	17,21	34472.1001	9	38345.0000	25
01331.0004	15	21800.0015	11	34536.0001	15	38396.0001	11
01347.0000	9	21801.0002	19	34666.0000	5	38396.0002	11
01359.0000	11	22978.0000	19	34666.0001	11	38664.1002	5
01360.0001	9	23717.0003	19	34667.0000	9,11	38668.0000	5
01360.0002	11	23954.0000	11	34689.0000	21	38683.0000	15
01382.0002	7	24224.0000	9	34714.0000	11	38687.0000	11
01390.0000	27	24457.0002	9	34729.1001	11	38701.0000	23
01403.0000	9	24733.0011	19	34729.1003	11	38741.0000	21
01501.0000	19	25743.0000	23	34729.1004	11	38808.0000	13
01512.0000	15	26369.0000	19	34765.0000	15	38811.0000	13
01521.0000	11	26401.0000	23	34997.0000	15	38894.0001	27
01526.0001	5	26443.0001	21	34998.0000	15,25	38933.0000	9
01590.0000	27	26528.0000	5	35052.0002	9	38948.0000	17
01666.0000	27	27437.0001	27	35260.0000	9,27	38990.1001	5
02328.0003	15	28067.0000	23	35833.0000	13	38995.0000	21
02336.0000	5,11,15,25	28095.0000	9	35912.1001	5	38996.0000	21
02434.0014	25	28281.0003	19	35912.1004	5	39015.0000	11
02434.0016	25	28292.0002	19	35915.1002	7	39030.0000	9
02434.0017	25	28292.0003	19	35916.1002	5	39033.0000	9
02434.1000	25	28297.0000	25	35926.0000	5	39034.0000	9
02434.1001	25	28526.0002	19,21	36017.1000	11	39036.0000	9
02536.0000	19,21	28526.0023	21	36224.1001	27	39038.0000	9
03633.0000	19	28526.0030	21	36398.0000	27	39040.1000	9
03803.0002	19	28526.0036	19	36629.0001	21	39041.1000	9
03996.0000	5	28526.1000	19,21	36629.0002	11	39044.1001	27
05515.0000	19	28526.1001	19,21	36629.0003	21	39141.0000	27
07070.0000	25	28526.1002	19,21	36647.0001	5,9	39167.0000	9
11630.0001	17	28526.1003	19,21	36653.0001	23	39258.0000	9
11646.0002	9	28891.1008	19	36670.0000	7	39263.0000	23
11707.0020	21	29081.0001	27	36770.0000	23	39263.0001	23
11707.0046	25	32283.0000	17,27	36773.0000	23	39277.1000	11
11707.0047	25	32337.0000	23	36774.0000	23	39280.0000	27
11707.0048	25	32386.0001	23	36896.0000	5	39284.0000	5
11707.1000	21,25	32609.0000	15	37010.1002	23	39285.1000	19
11707.1001	21,25	32652.0000	15	37011.0001	23	39286.1000	15
11707.1002	21,25	32654.0000	15	37037.0001	23	39287.0000	13
12398.0002	19	32706.1000	15	37065.0001	7	39291.0000	27
12422.0000	21	32734.0000	13	37297.0000	17	39292.0001	27

NUMERICAL INDEX

PART NO.	PAGE NO.	PART NO.	PAGE NO.	PART NO.	PAGE NO.	PART NO.	PAGE NO.
39293.0000.....	15						
39307.0000.....	13						
39308.1000.....	7						
39309.0000.....	25						
39310.0000.....	25						
39311.0000.....	25						
39312.0000.....	25						
39313.0000.....	25						
39314.0000.....	25						
39315.0000.....	25						
39316.1000.....	19						
39317.0000.....	27						
39318.0002.....	5						
39458.0000.....	13						
39474.0000.....	9						
39479.0000.....	9						
39507.1000.....	25						
39507.1001.....	25						
39507.1002.....	25						
39551.1000.....	27						
39552.0000.....	25						
39583.0000.....	5						
39591.0000.....	27						
39652.0000.....	11						
39660.1000.....	11						
40021.0000.....	27						
40037.1000.....	15						
40054.0000.....	9						
40056.0001.....	17						
40506.0004.....	17						
41263.0000.....	13						
41264.0000.....	13						
41415.0000.....	13						
41744.0000.....	11						
M2531.0000.....	15						