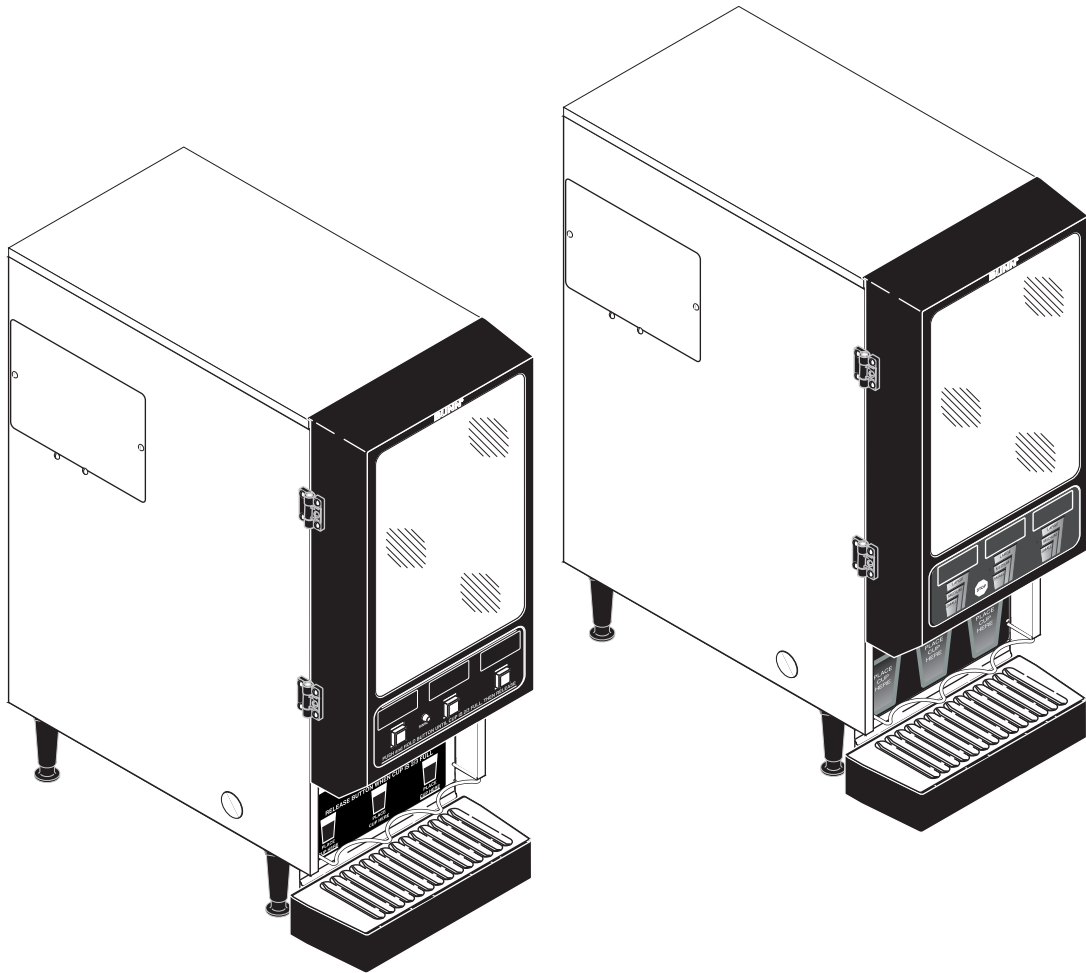


# **BUNN**®

***FMD-3***  
***FMD DBC-3***  
***FMDA DBC-3***  
S/N FMD0013000 - UP



## **ILLUSTRATED PARTS CATALOG**

Designs, materials, weights, specifications, and dimensions for equipment or replacement parts are subject to change without notice.

**BUNN-O-MATIC CORPORATION**

POST OFFICE BOX 3227

SPRINGFIELD, ILLINOIS 62708-3227

PHONE: (217) 529-6601 FAX: (217) 529-6644

## BUNN-O-MATIC COMMERCIAL PRODUCT WARRANTY

Bunn-O-Matic Corp. ("BUNN") warrants equipment manufactured by it as follows:

- 1) All equipment other than as specified below: 2 years parts and 1 year labor.
- 2) Electronic circuit and/or control boards: parts and labor for 3 years.
- 3) Compressors on refrigeration equipment: 5 years parts and 1 year labor.
- 4) Grinding burrs on coffee grinding equipment to grind coffee to meet original factory screen sieve analysis: parts and labor for 3 years or 30,000 pounds of coffee, whichever comes first.

These warranty periods run from the date of installation BUNN warrants that the equipment manufactured by it will be commercially free of defects in material and workmanship existing at the time of manufacture and appearing within the applicable warranty period. This warranty does not apply to any equipment, component or part that was not manufactured by BUNN or that, in BUNN's judgment, has been affected by misuse, neglect, alteration, improper installation or operation, improper maintenance or repair, damage or casualty. This warranty is conditioned on the Buyer 1) giving BUNN prompt notice of any claim to be made under this warranty by telephone at (217) 529-6601 or by writing to Post Office Box 3227, Springfield, Illinois 62708-3227; 2) if requested by BUNN, shipping the defective equipment prepaid to an authorized BUNN service location; and 3) receiving prior authorization from BUNN that the defective equipment is under warranty.

**THE FOREGOING WARRANTY IS EXCLUSIVE AND IS IN LIEU OF ANY OTHER WARRANTY, WRITTEN OR ORAL, EXPRESS OR IMPLIED, INCLUDING, BUT NOT LIMITED TO, ANY IMPLIED WARRANTY OF EITHER MERCHANTABILITY OR FITNESS FOR A PARTICULAR PURPOSE.** The agents, dealers or employees of BUNN are not authorized to make modifications to this warranty or to make additional warranties that are binding on BUNN. Accordingly, statements by such individuals, whether oral or written, do not constitute warranties and should not be relied upon.

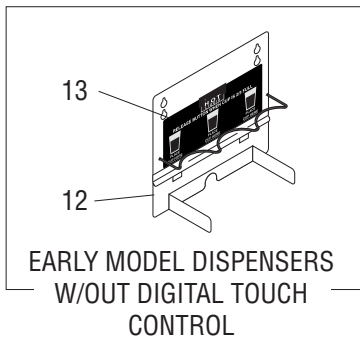
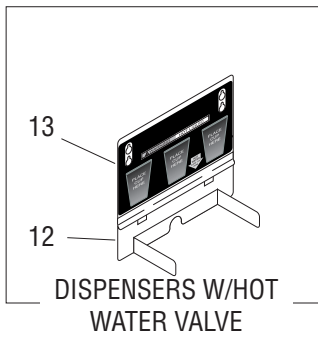
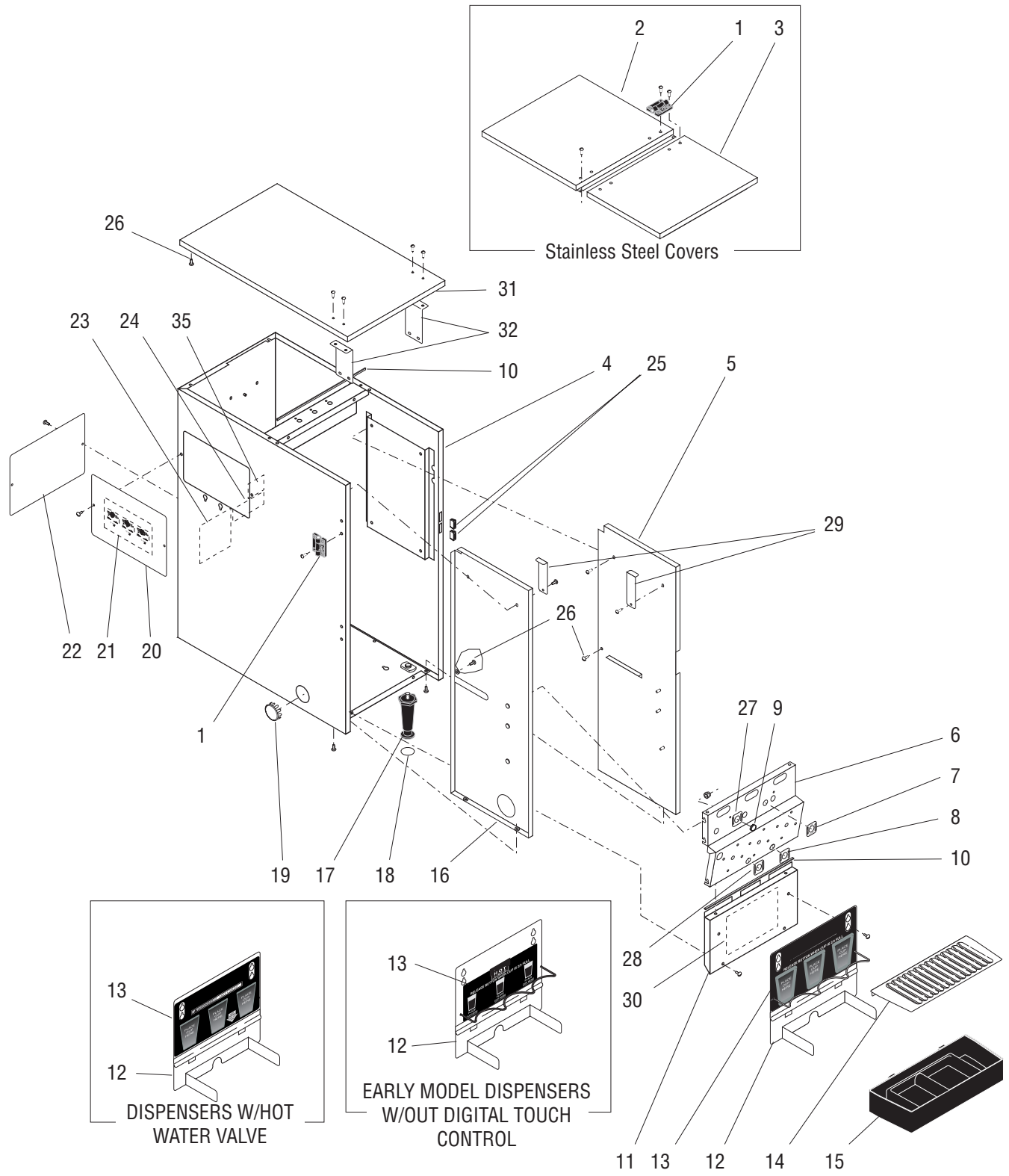
If BUNN determines in its sole discretion that the equipment does not conform to the warranty, BUNN, at its exclusive option while the equipment is under warranty, shall either 1) provide at no charge replacement parts and/or labor (during the applicable parts and labor warranty periods specified above) to repair the defective components, provided that this repair is done by a BUNN Authorized Service Representative; or 2) shall replace the equipment or refund the purchase price for the equipment.

**THE BUYER'S REMEDY AGAINST BUNN FOR THE BREACH OF ANY OBLIGATION ARISING OUT OF THE SALE OF THIS EQUIPMENT, WHETHER DERIVED FROM WARRANTY OR OTHERWISE, SHALL BE LIMITED, AT BUNN'S SOLE OPTION AS SPECIFIED HEREIN, TO REPAIR, REPLACEMENT OR REFUND.**

In no event shall BUNN be liable for any other damage or loss, including, but not limited to, lost profits, lost sales, loss of use of equipment, claims of Buyer's customers, cost of capital, cost of down time, cost of substitute equipment, facilities or services, or any other special, incidental or consequential damages.

# TABLE OF CONTENTS

TITLE	PAGE NO.
Auger Drive and Hopper Assembly .....	12
Covers, Panels and Drip Tray .....	4
Dispense Valves and Lines.....	20
Door, Lamp, Dispense Switches and Panels .....	8
Electrical Controls.....	22
Mixing/Whipper Chambers and Drive Motor.....	14
Numerical Index.....	26
Strainer, Solenoid, Fill Valve and Lines.....	18
Tank, Heater and Overflow Protection .....	16



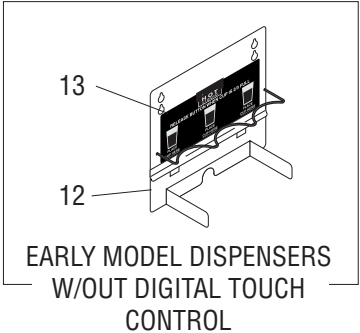
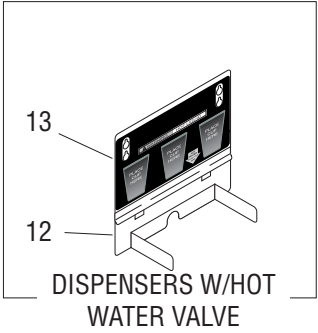
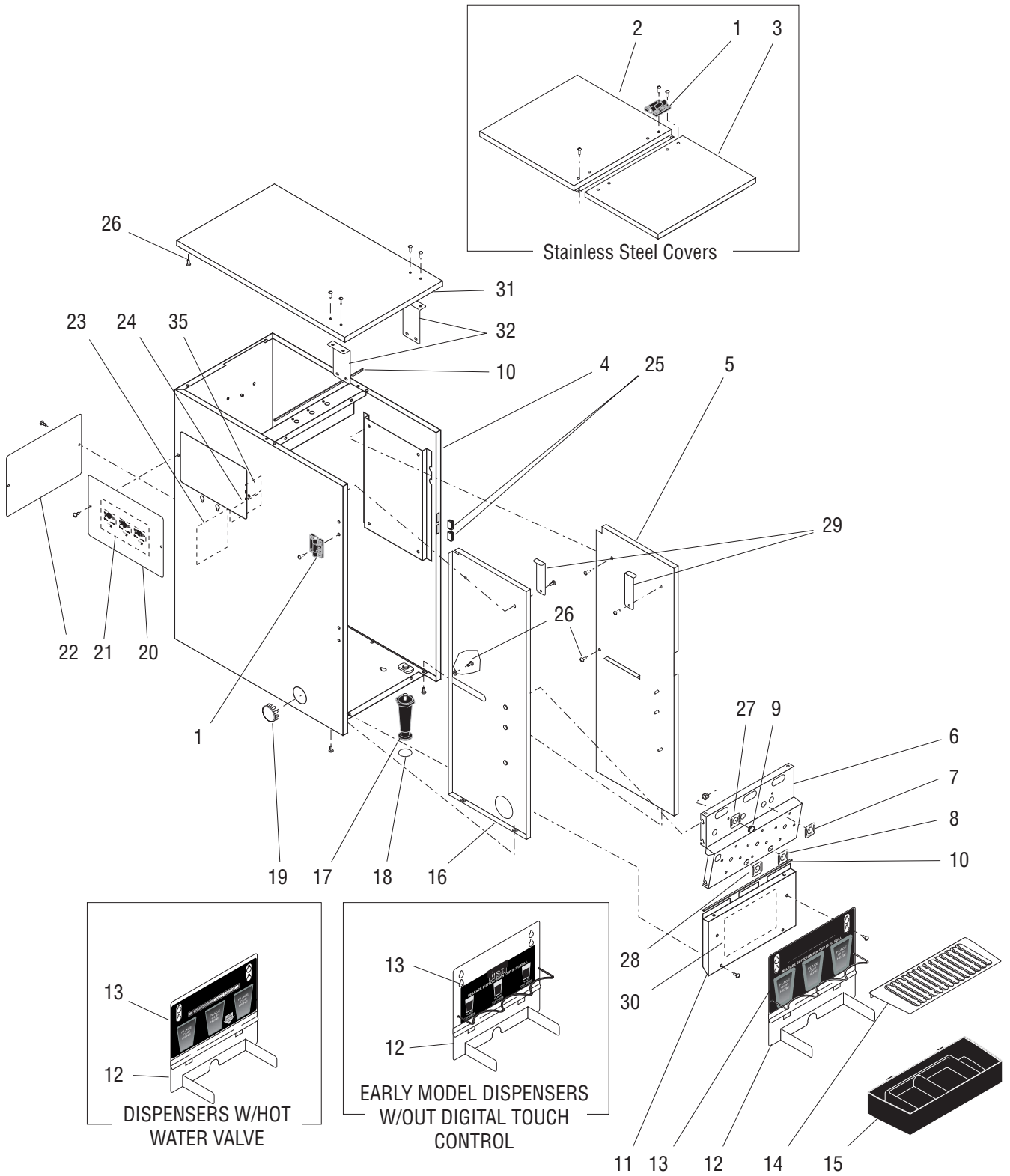
## COVERS, PANELS AND DRIP TRAY

ITEM	PART NO.	QTY.	DESCRIPTION
1	26504.0000	4	Hinge
	02308.0000	12	Screw, Pan Head #8-32 x .375"
2	28671.0000	1	Cover, Top Rear - SST
	02308.0000	2	Screw, Pan Head #8-32 x .375"
3	28670.0000	1	Cover, Top Front - SST
4	28209.1000	1	Housing W/Decals - BLK (Includes items 23 & 24)
	28661.1000	1	Housing W/Decals - SST (Includes items 23 & 24)
	28661.1002	1	Housing W/Decals - SST (Includes items 23, 24 & 33) (230V "A" Model Dispensers)
5	33886.0001	1	Panel, Right
	01311.0001	4	Screw, Truss Head - Locking #8-32 x .25"
6	28270.0000	1	Panel, Whipper Motor Mounting (Also order items 7, 8, one of item 9 & 28 - dispensers w/out cold water option, 7, 8, one of item 9, 27 & 28 - dispenser w/cold water option and 7, 8, 9 - dispensers w/digital touch control)
	28270.0001	1	Panel, Whipper Motor Mounting (Also order items 7, 8 & 9) (Used on dispensers with Hot water Valve)
	00991.0000	6	Nut, Elastic Lock #8-32
7	26524.0000	1	Decal, Tank Heater Switch
8	26523.0000	1	Decal, Rinse/Run Switch
9	00619.0010	2	Plug, Hole .437" Dia (Not used on soup dispensers or dispensers w/cold water option) (One less used on dispensers w/out digital touch control)
10	28366.0000*	2	Gasket, Foam W/Adhesive 10.1" LG (Order item 33)
11	29243.0000	1	Panel W/Decal, Lower Front Access (Includes item 30) (Dispensers w/out digital touch control)
	29243.0001	1	Panel W/Decal, Lower Front Access (Includes item 30) (Dispensers w/digital touch control)
	29243.0002	1	Panel W/Decal, Lower Front Access (Includes item 30) (Dispensers w/digital touch control and hot water valve)
	01311.0000	2	Screw, Truss Head #8-32 x .25"
12	28436.0000	1	Panel W/Decal, Splash (Includes item 13) (Dispensers w/out digital touch control)
	28436.0003	1	Panel W/Decal, Splash (Includes item 13) (Dispensers w/digital touch control)
	28436.0004	1	Panel W/Decal, Splash (Includes item 13) (Dispensers w/hot water valve)
	01311.0001	2	Screw, Truss Head - Locking #8-32 x .25"
13	-----	1	Decal, Caution-Hot Liquid & Cup Placement (Early models, order late model decal) <span style="font-size: 2em; vertical-align: middle;">}</span> Dispensers w/out digital touch control
	29216.0002	1	Decal, Caution-Hot Liquid & Cup Placement (Late models)
	29216.0000	1	Decal, Caution-Hot Liquid & Cup Placement (Dispensers w/digital touch control)
	29216.0001	1	Decal, Caution-Hot Liquid & Cup Placement (Dispensers w/digital touch control and w/hot water valve)
14	28267.0000	1	Cover, Drip Tray
15	28268.0000	1	Drip Tray
16	33886.0000	1	Panel, Left
	01311.0001	4	Screw, Truss Head - Locking #8-32 x .25"

(Continued)

\* Indicates the part number listed is for reference only. See DESCRIPTION for possible service replacement.

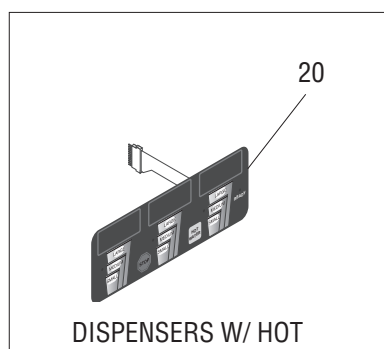
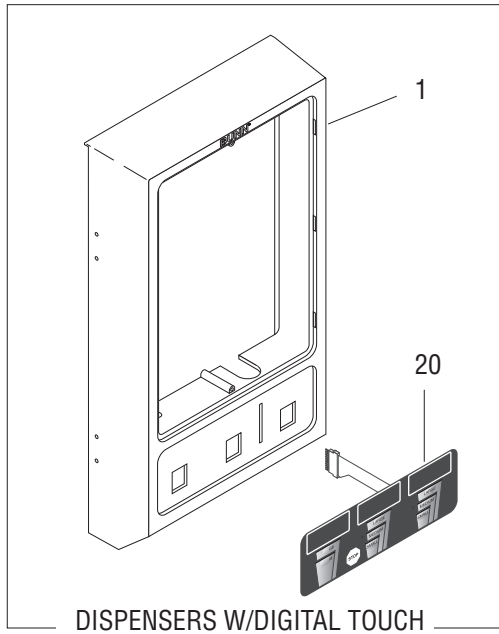
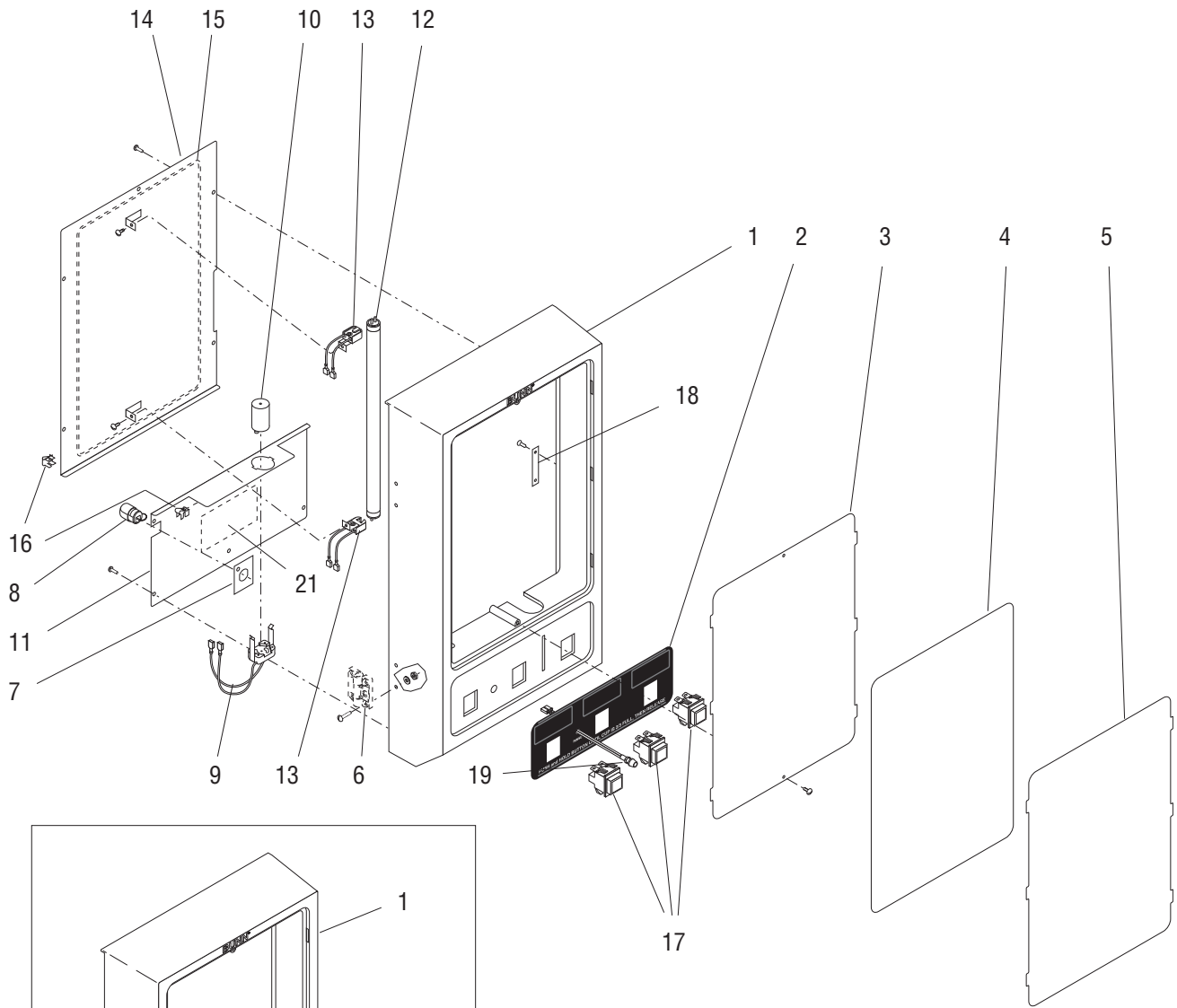
(Continued)



## COVERS, PANELS AND DRIP TRAY

ITEM	PART NO.	QTY.	DESCRIPTION
17	26528.0000	4	Leg, 4.0" Adjustable (Also see item 34)
18	03996.0000	4	Pad, Rubber 1.25" Dia. (Also see item 34)
19	23164.0002	1	Plug, Hole 1.50" Dia. - BLK
	00619.0011	1	Plug, Hole 1.50" Dia. - SST
20	28206.0000	1	Cover, Left Side Access - BLK (Also order item 21)
	28668.0000	1	Cover, Left Side Access - SST (Also order item 21)
	01311.0003	2	Screw, Truss Head - BLK #8-32 x .25"
	01311.0000	2	Screw, Truss Head - SST #8-32 x .25"
21	28368.0000	1	Decal, Thermostat Adjustment (Dispensers with mechanical thermostat)
22	28206.0000	1	Cover, Rear Access - BLK
	28684.0000	1	Cover, Rear Access - SST
	01311.0003	2	Screw, Truss Head - BLK #8-32 x .25"
	01311.0000	2	Screw, Truss Head - SST #8-32 x .25"
23	00831.0000	1	Decal, Warning-Electrical
24	00656.0000	1	Decal, Comply to Plumbing Code
25	21436.0000	2	Catch, Magnetic
26	01311.0001	4	Screw, Truss Head - Locking #8-32 x .375"
27	26522.0000	1	Decal - HOT/COLD (Models w/cold water option)
28	28872.0000	1	Decal - INCREASE/DECREASE (Dispensers w/out digital touch control)
	26523.0000	1	Decal - RINSE/RUN (Dispensers w/digital touch control and hot water valve)
29	28910.0000	2	Bracket Kit, Cover Retainer (Includes two brackets) (Optional)
30	28874.0000	1	Schematic, 120V, 120/208V & 120/240V (Dispensers w/out digital touch control)
	29218.0000	1	Schematic, 120V, 120/208V & 120/240V (Dispensers w/digital touch control)
	29218.0002	1	Schematic, 120V (Dispensers w/digital touch control & hot water valve)
	-----	-	Schematic, 230V (230V "A" Model dispensers)
31	37724.1001	1	Cover, Top - BLK (Includes item 32)
32	38053.0000	2	Bracket
	01311.0003	4	Screw, Truss Head #8-32 x .38"
33	28366.1000	-	Gasket, Foam W/Adhesive - 12" LG
	28366.1001	-	Gasket, Foam W/Adhesive - 36" LG
	28366.1002	-	Gasket, Foam W/Adhesive - 120" LG
			} Not Illustrated
34	13255.0003	-	Kit, Leg 4.0" Adjustable (Includes 4 each of items 17 & 18)
35	-----	-	Label, CE Conformity (230V "A" Model dispensers only)

\* Indicates the part number listed is for reference only. See DESCRIPTION for possible service replacement.





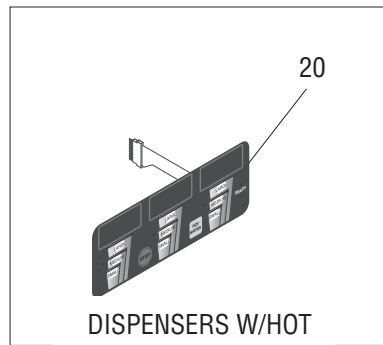
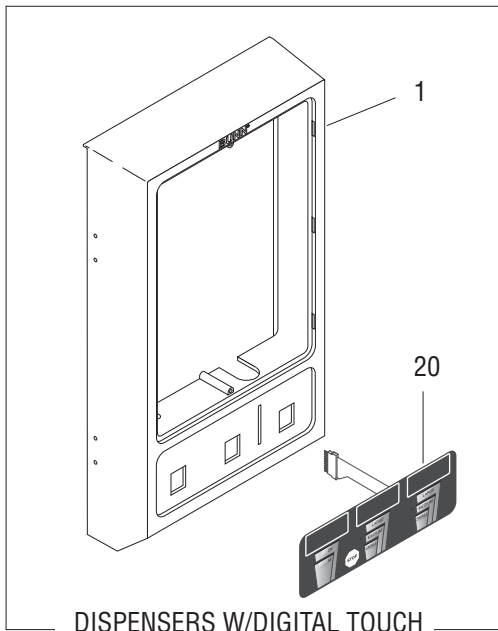
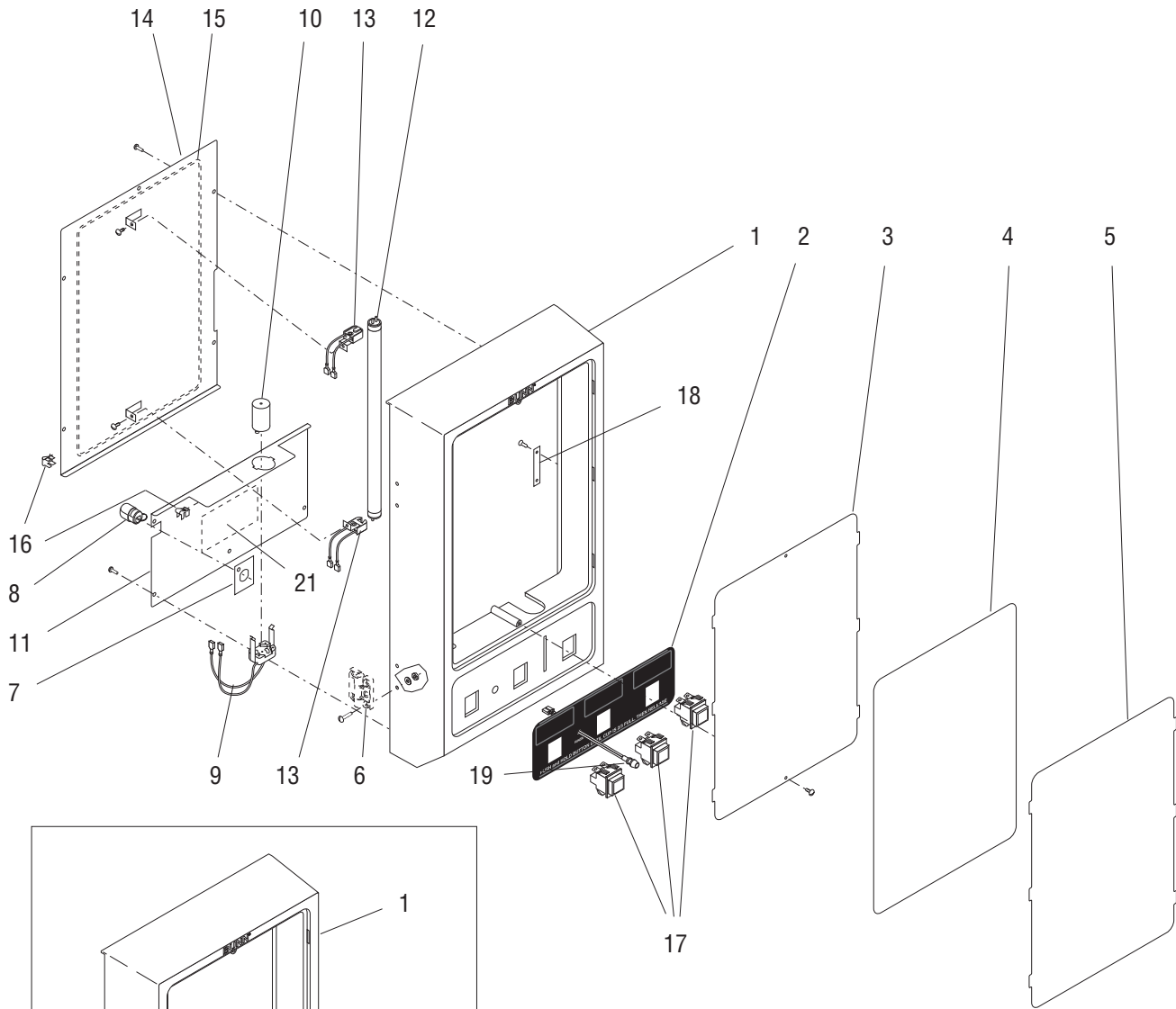
## DOOR, LAMP, DISPENSE SWITCHES AND PANELS

ITEM	PART NO.	QTY.	DESCRIPTION
1	28147.1000	1	Door W/Decal (Includes items 2 and 18) (Dispensers w/out digital touch control)
	28147.1002	1	Door (Includes item 18) (Dispensers w/digital touch control)
	01390.0000	4	Screw, Round Head #8-32 x .625"
	01522.0000	4	Washer, Flat .203 I.D. x .50 O.D."
	00991.0000	4	Nut, Elastic Stop #8-32
2	28301.0003	1	Decal, Door Front (Dispensers w/out digital touch control)
3	38031.0001	1	Window, Door - Inside
	02336.0000	2	Screw, Truss Head #4-40 x .375"
4	28362.0000	1	Display, Graphics (Cafe Scene)
	28682.0000	1	Display, Graphics (Soup)
5	38031.0000	1	Window, Door - Outside
6	-----	1	Hinge, Door (See Covers, Panels and Drip Tray)
7	26892.0000	1	Plate, Strain Relief
8	26444.0000	2	Bushing, Strain Relief
9	28325.0000	1	Socket W/Terminals, Starter
10	27619.0000	1	Starter, Lamp
11	28261.0000	1	Panel, Door - Lower (Also order item 21)
	01383.0001	5	Screw, Pan Head #6-32 x .375"
12	26239.0000	1	Lamp, Fluorescent - 8 Watts
13	28322.0000	2	Lamp Holder, Fluorescent
	02328.0002	2	Screw, Pan Head #6 - 32 x .188"
14	28332.1000	1	Panel W/Decal, Door - Upper (Includes item 15)
	01383.0001	5	Screw, Truss Head #6 - 32 x .25"
15	28870.0000	1	Decal, Cleaning
16	28335.0000	2	Clip, Ground
17	28296.0000	3	Switch Assembly, Dispense (Dispensers w/out digital touch control)
18	27298.0000	1	Strike, Self Adhesive (Prior to S/N FMD0017786)
	29448.0000	1	Strike, Door
	21716.0000	2	Screw, Flat Head #6 - 32 x .25" ] S/N FMD0017786 and up
19	12517.0001	1	LED W/Terminals (Dispensers w/out digital touch control)
	25292.0000	1	Lockwasher M6
	34130.0000	1	Nut M6
20	28543.0000	1	Switch, Digital Touch Control
	28543.0003	1	Switch, Digital Touch Control (Used in dispensers with Hot Water Valve)
21	29308.0000	1	Decal, Hopper Installation

(Continued)

\* Indicates the part number listed is for reference only. See DESCRIPTION for possible service replacement.

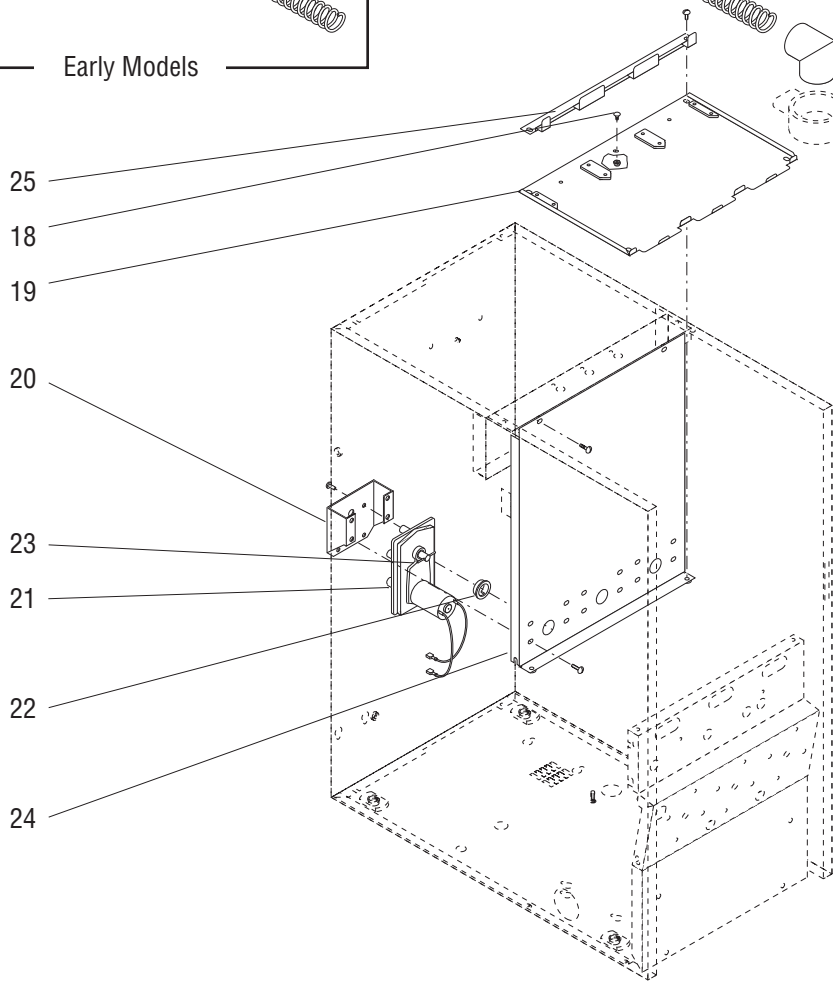
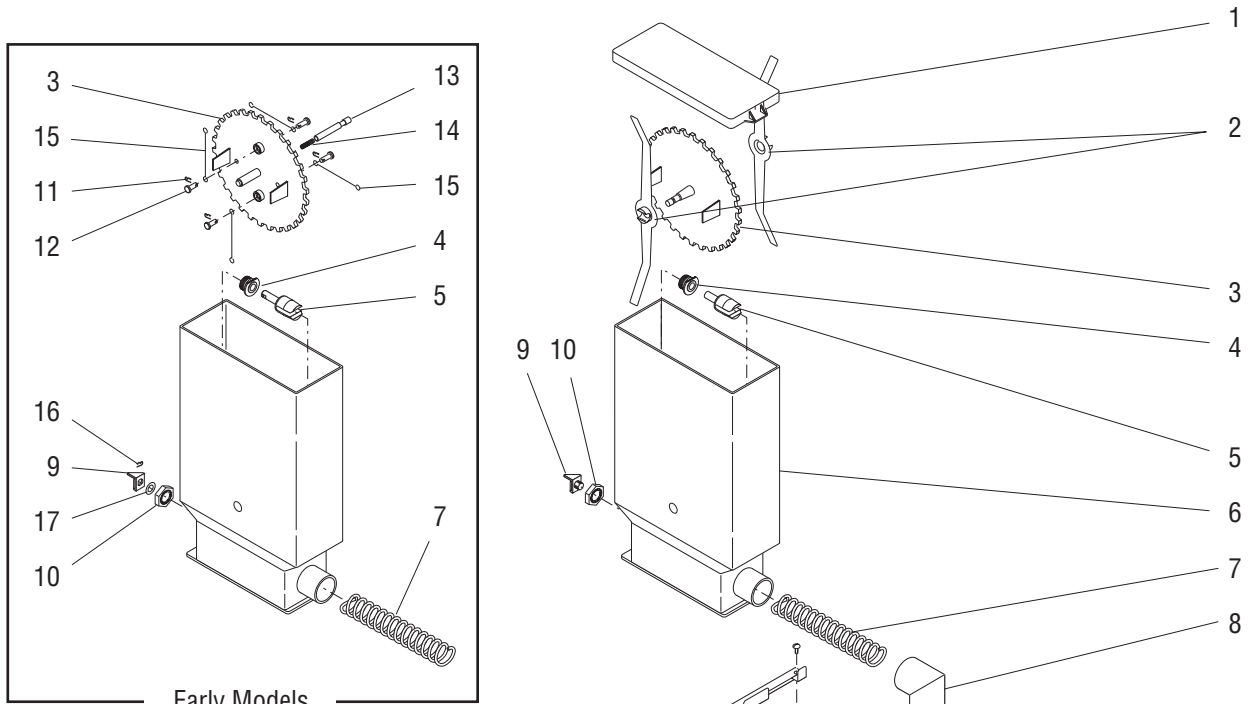
(Continued)



## DOOR, LAMP, DISPENSE SWITCHES AND PANELS

ITEM	PART NO.	QTY.	DESCRIPTION
NOTE: The following items are not illustrated			
22	28549.0000	1	Wiring Harness, Door Interconnect 120V (Includes item 7 & 1 of item 8) (Dispensers w/out digital touch control)
	29066.0000	1	Wiring Harness, Door Interconnect 120V (Includes item 7 & 1 of item 8) (Dispensers w/digital touch control)
	29066.0001	1	Wiring Harness, Door Interconnect 120V (Dispenser /Hot water valve)
23	28336.0000	1	Wiring Harness, Door 120V (120V & 230V "A" Model dispensers)
24	26537.0000	1	Decal, Flavors (Almond Amaretto, Cappuccino, French Vanilla, Hazelnut, Chocolate Raspberry, Cappuccino Supreme, Hot Chocolate and Raspberry Mocha)
	26537.0001	1	Decal, Flavors (Swiss Mocha, Mocha, Raspberry Vanilla, Irish Creme, Coffee, Original, Chocolate French Vanilla and Butter Pecan)
	26537.0003	1	Decal, Flavors (White Chocolate, Cinnamon Vanilla Nut, Decaf, Regular, Apple Cider, Fat Free French Vanilla and Cinnamon Vanilla)
	28833.0000	1	Decal, Soup Flavors (Cream of Chicken, Mushroom, Tomato, Broccoli, Potato and Cheddar Cheese)
	28833.0001	1	Decal, Soup Flavors (Chicken Consomme, French Onion, Chicken Noddle, Beef Noddle, Seafood Bisque and Clam Chowder)

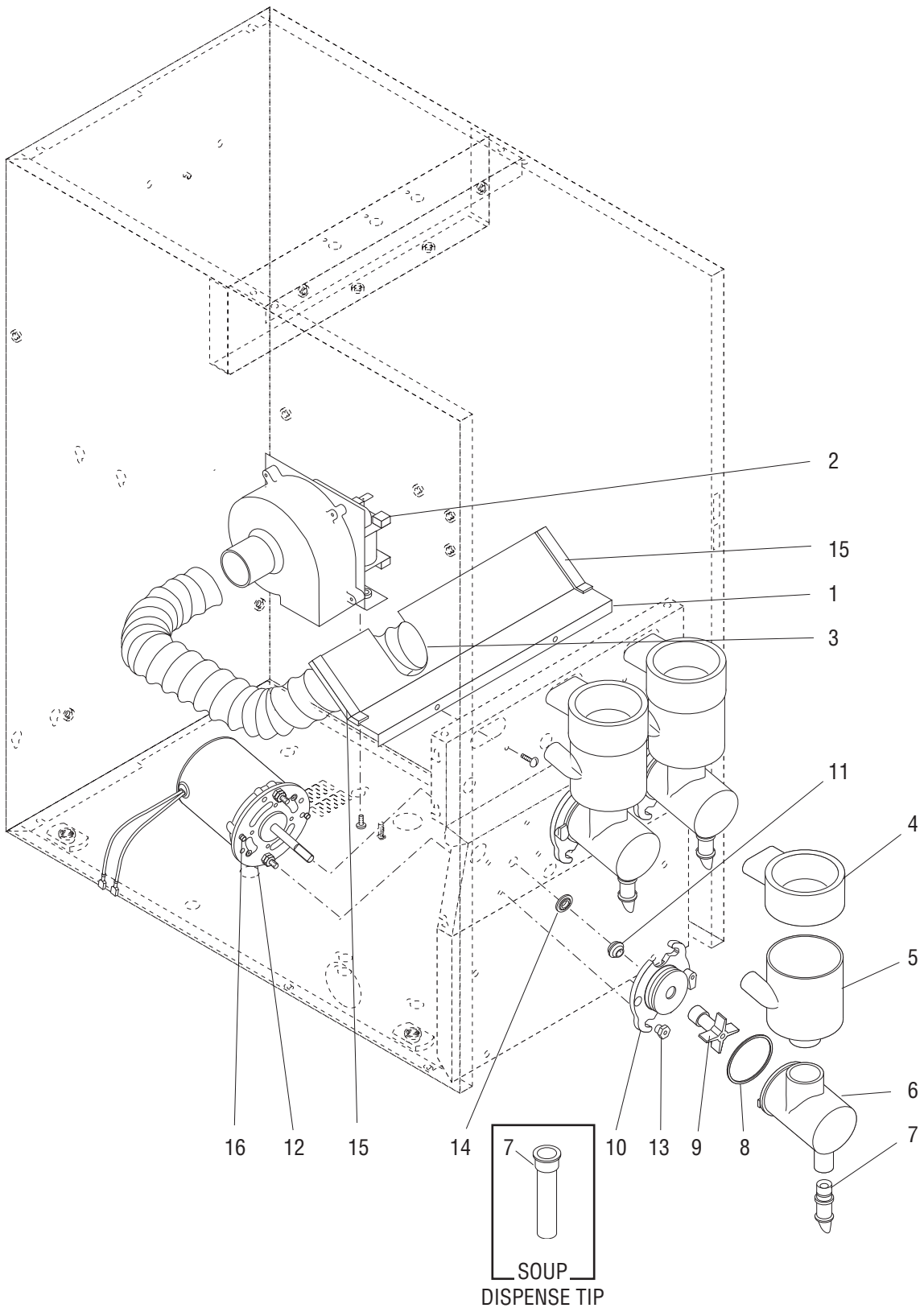
\* Indicates the part number listed is for reference only. See DESCRIPTION for possible service replacement.



## AUGER DRIVE AND HOPPER ASSEMBLY

ITEM	PART NO.	QTY.	DESCRIPTION	
-	28424.1003	3	Hopper Assy (22 Tooth Agitator Disk) (Includes items 1 thru 10)	
-	28424.1004	3	Hopper Assy (30 Tooth Agitator Disk) (Includes items 1 thru 10)	
1	28061.0000	1	Lid, Hopper	
2	32337.0000	2	Mixing Blade (Late models)	
3	26435.0000	1	Disk, Agitator (22 Tooth)	} Early models
	26435.0001	1	Disk, Agitator (30 Tooth)	
	32386.0000	1	Disk, Agitator (22 Tooth)	} Late models
	32386.0001	1	Disk, Agitator (30 Tooth)	
4	28067.0000	1	Bushing, Auger Drive Shaft	
5	-----	1	Shaft, Auger Drive (Early models order item 27)	
	26940.0002	1	Shaft, Auger Drive (Late models)	
6	28425.0000	1	Hopper	
7	26112.0001	1	Auger, Wire (use w/22-tooth Disk)	
	21355.0001	1	Auger, Wire (use w/30-tooth Disk)	
8	25903.0000	1	Elbow, Ejector	
9	-----	1	Bracket, Auger Drive (Early models order item 27)	
	32383.0000	1	Bracket, Auger Drive (Late models)	
10	25743.0000	1	Locknut	
11	21358.0000	4	Clip, Retainer	} Early models
12	21357.0000	4	Shaft, Wiper	
13	26436.0000	1	Rod, Agitator Support	
14	26449.0000	1	Spring	
15	26441.0000	4	Wire, Agitator	
16	21358.0000	1	Clip, Retainer	
17	21365.0000	1	Washer, .31" I.D. x .56" O.D.	
18	20960.0000	3	Screw, Shoulder #6-32 x .375"	
	00991.0002	3	Nut, Elastic Lock #6-32	
19	28333.0000	1	Panel, Hopper Support	
	29933.1000	1	Panel, Hopper Support (Models with Hopper Guides)	
	01311.0000	4	Screw, Truss Head #8-32 x .25"	
20	25794.0001	3	Bracket, Motor Mounting	
	01311.0001	12	Screw, Truss Head #8-32 x .25" Locking	
21	29642.1001	3	Gearmotor W/Pin, Auger (Includes item 20 & 23)	
	01311.0000	12	Screw, Truss Head #8-32 x .25"	
	01511.0000	3	Lock Washer, External Tooth #8	
22	26401.0000	3	Dust Seal, Hopper Motor	
23	26247.0000	3	Pin, Spring .094" Dia. x 1.0"	
24	28286.0000	1	Panel, Hopper Motor Mounting	
	01311.0001	2	Screw, Truss Head - Locking #8-32 x .25"	
25	29713.0000	1	Bracket, Hopper Locator	
26	11685.0000	1	Brush, Hopper Cleaning (Not Illustrated)	
27	32394.0000	-	Kit, Auger Drive Shaft (Converts early model Drive Shaft to late model Drive Shaft)	

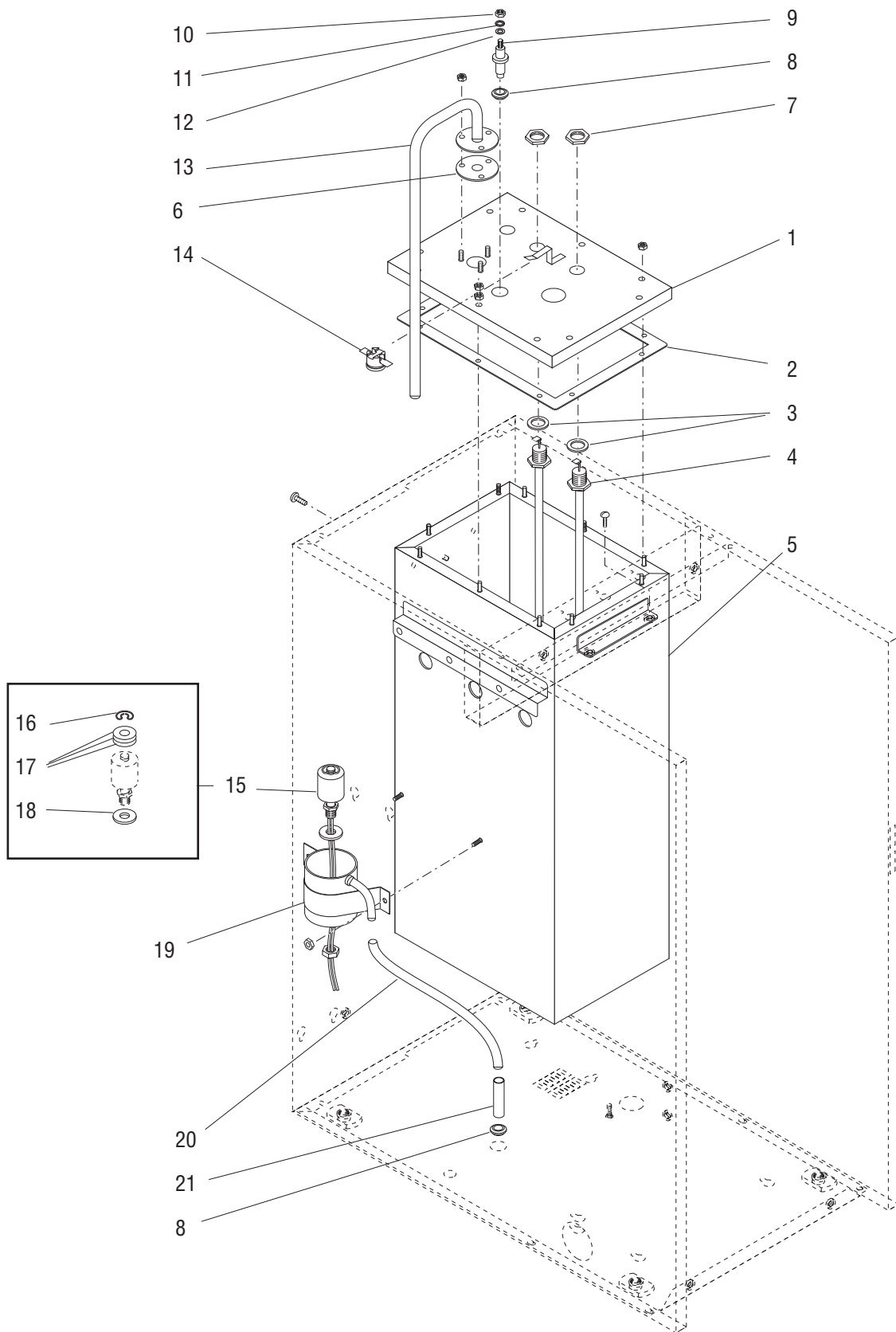
\* Indicates the part number listed is for reference only. See DESCRIPTION for possible service replacement.



## MIXING/WHIPPER CHAMBERS AND DRIVE MOTOR

ITEM	PART NO.	QTY.	DESCRIPTION
1	28208.1000	1	Baffle Assembly, Fan (Includes item 15)
	02336.0000	2	Screw, Truss Head #4-40 x .25"
2	28295.0000	1	Fan & Bracket Assembly 120V
	28295.0001	1	Fan & Bracket Assembly 230V (240V & 230V "A" Model dispensers)
	01311.0001	2	Screw, Truss Head - Locking #8-32 x .25"
3	28297.0000	1	Hose, Vacuum
4	25732.0000	3	Steam Collector
5	25733.0000	3	Mixing Chamber
6	25734.0000	3	Whipper Chamber
7	25736.0000	3	Dispense Tip - Beverages
	28864.0000	3	Dispense Tip - Soup
8	24733.0010	3	O-Ring
9	25902.0000	3	Frother
10	28866.0000	3	Receptacle, Whipper Chamber
11	26356.0000	3	Seal, Shaft
12	28428.1000	3	Motor, Whipper 120V (Includes item 16)
	28428.1002	3	Motor, Whipper 240V (240V & 230V "A" Model dispensers) (Includes item 16)
13	28865.0000	6	Nut, Whipper Motor/Receptacle Mounting
14	28867.0000	3	Slinger
15	02434.0009*	2	Gasket, Silicone 2.25" LG (Order item 17)
16	32306.0000	6	Spacer
17	02434.1000	-	Gasket, Silicone 18" LG
18	32906.0000	-	Kit, Preventive Maintenance (Includes items 4 thru 11 and 25903.0000 Elbow)

\* Indicates the part number listed is for reference only. See DESCRIPTION for possible service replacement.



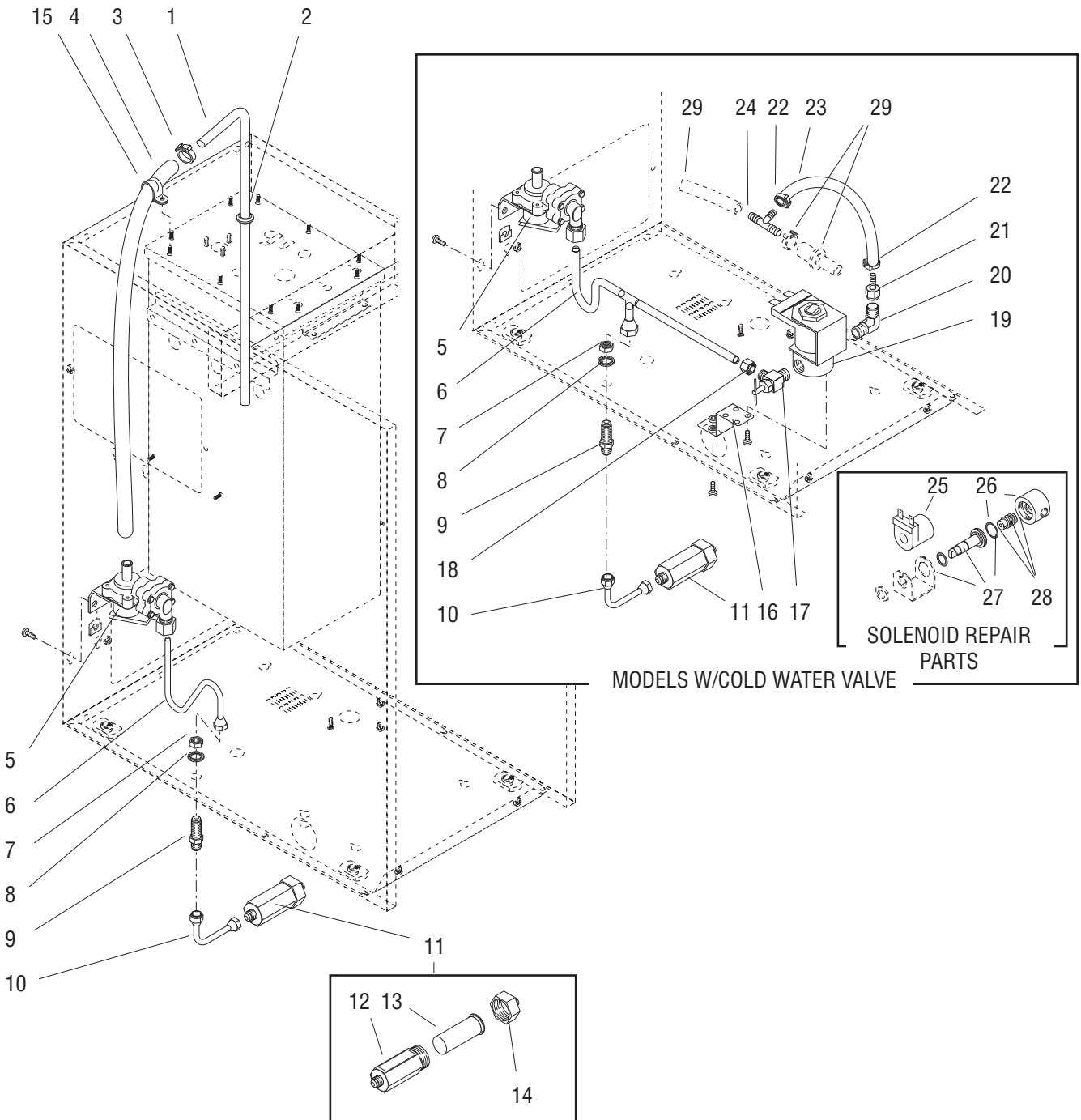


## TANK, HEATER AND OVERFLOW PROTECTION

ITEM	PART NO.	QTY.	DESCRIPTION
1	28281.0000	1	Lid, Tank
	00908.0000	11	Nut, Hex #8-32
2	22978.0000	1	Gasket, Tank Lid
3	00943.0000	2	Gasket, Tank Heater
4	20201.4151	1	Tank Heater Kit, 1700W 120V (Includes item 3)
	20201.0750	1	Tank Heater Kit, 3500W 240V (240V & 230V "A" Model dispensers) (Includes item 3)
5	37978.1000	1	Tank
	37978.1001	1	Tank (Used with Hot Water Valve dispensers)
	02308.0000	2	Screw, Pan Head - Serrated #8-32 x .375"
	01311.0003	2	Screw, Truss Head - BLK Locking #8-32 x .250"
	01311.0001	2	Screw, Truss Head - SST Locking #8-32 x .250"
6	05515.0000	1	Gasket, Overflow Tube
7	00942.0000	2	Nut, Hex .50"-20
8	02536.0000	2	Grommet, .375" I.D.
9	26665.1000	1	Probe Kit (Includes items 10, 11 & 12)
10	00908.0000	1	Nut, Hex #8-32
11	20203.0100	1	Lockwasher, Internal Tooth #8
12	01501.0000	1	Washer, Flat .16" I.D. x .375" O.D.
13	28292.0000	1	Tube Assy, Overflow
	00908.0000	3	Nut, Hex #8-32
14	29329.1000	1	Thermostat, Limit
15	03803.0000	1	Switch Assy, Liquid Level (Includes items 16, 17 & 18)
	00946.0000	1	Nut, Hex .125" FPT
16	03807.0000	1	Clip, Spring
17	-----	3	Washer, Adjusting (DO NOT USE IN THIS APPLICATION)
18	03633.0000	2	Gasket, Float Switch (Only 1 used in this application)
19	12552.0000	1	Overflow Cup
	00908.0000	2	Nut, Hex #8 - 32
20	28526.0000*	1	Tube, Silicone .312" I.D. x .562 x 11.5" (Order item 23)
21	21801.0002	1	Tube, .375" O.D. x 1.50"
22	01570.0000	2	Wire Nut, 2 - 24 AWG
23	28526.1000	-	Tube, Silicone .312" I.D. x .562" O.D. x 12"
	28526.1001	-	Tube, Silicone .312" I.D. x .562" O.D. x 36"
	28526.1002	-	Tube, Silicone .312" I.D. x .562" O.D. x 60"
	28526.1003	-	Tube, Silicone .312" I.D. x .562" O.D. x 120"

} Not Illustrated

\* Indicates the part number listed is for reference only. See DESCRIPTION for possible service replacement.

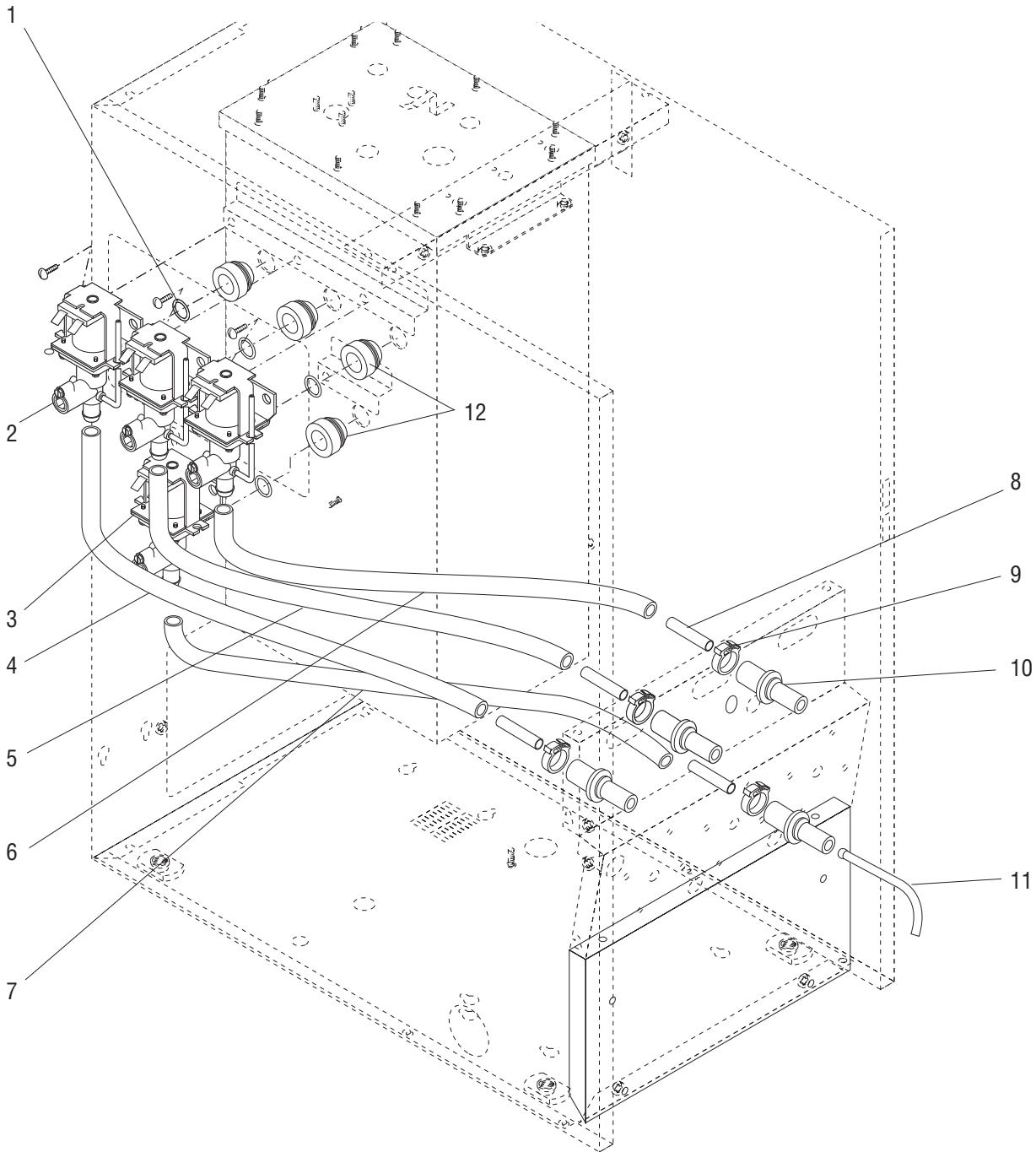


## STRAINER, SOLENOID, FILL VALVE AND LINES

ITEM	PART NO.	QTY.	DESCRIPTION
1	28298.0000	1	Tube, Tank Fill
2	02536.0000	1	Grommet, .375" I.D.
3	12422.0001	1	Clamp, Hose .59"/.66" I.D
4	28526.0009*	1	Tube, Silicone .312" I.D. x .562" O.D. x 24.0" (Order item 30)
5	26135.0001	1	Valve Assy, Solenoid 120V (Serviced only as an assembly) (See Item 31)
	26135.0002	1	Valve Assy, Solenoid 240V (240V & 230V "A" Model dispensers) (Serviced only as an assembly) (See item 31)
	02322.0002	2	Screw, Truss Head - BLK #8-32 x .375"
	01315.0000	2	Screw, Truss Head - SST #8-32 x .375"
	00938.0000	2	Fastener, U-Type #8-32
6	26661.0000	1	Tube Assy, Water Inlet (Models w/out cold water valve)
	28330.0000	1	Tube Assy, Water Inlet (Models w/cold water valve)
7	00463.0000	1	Nut, Hex .438"-20
8	01532.0000	1	Lockwasher, Internal Tooth .438"
9	00459.0000	1	Fitting, Bulkhead
10	21814.0016	1	Tube Assy
11	23820.1000	1	Water Strainer Assy (Includes item 12 thru 14)
12	-----	1	Body (Not available order item 11)
13	23721.0000	1	Screen
14	22249.0000	1	End Cap
15	00620.0000	1	Clamp, Hose
16	28275.0000	1	Bracket, Solenoid Mounting
	01311.0001	2	Screw, Truss Head - Locking #8-32 x .25"
17	00408.0001	1	Valve, Needle .25" Tube (Includes item 18)
18	00443.0000	1	Nut/Sleeve Assy, Compression
19	01085.0002	1	Solenoid Valve Assy, 120V
	01326.0000	2	Screw, Truss Head #10-32 x .25"
20	00400.0001	1	Elbow, Male .25" Male Flare x .125" MPT
21	00425.0000	1	Fitting, .25" Barb x .25" Flare Nut
22	12422.0000	2	Clamp, Hose .47"/.54" I.D.
23	11707.0026*	1	Tube, Silicone .25" I.D. x 9.5" LG (Order item 32)
24	26442.0000	1	Tee, Barb .375" x .375" x .25"
25	28480.0000	1	Coil, Solenoid Valve 120V
26	28479.0000	1	Base Kit, Solenoid Valve (Includes O-Ring)
27	28481.0000	1	Guide Kit, (Includes Washer & O-Ring)
28	01111.0002	1	Solenoid Valve Repair Kit (Includes Spring, Plunger and O-Ring)
29	-----	-	Tube & Clamp (See DISPENSE VALVES AND LINES)
30	28526.1001	-	Tube, Silicone .312" I.D. x .562" O.D. x 36"
	28526.1002	-	Tube, Silicone .312" I.D. x .562" O.D. x 60"
	28526.1003	-	Tube, Silicone .312" I.D. x .562" O.D. x 120"
31	26131.0000	-	Kit, Nut/O-ring (Includes Nut, Spacer, Grab Ring, Washer & 2 O-Rings)
32	11707.1000	-	Tube, Silicone .25" I.D. x .50" O.D. x 12"
	11707.1001	-	Tube, Silicone .25" I.D. x .50" O.D. x 36"
	11707.1002	-	Tube, Silicone .25" I.D. x .50" O.D. x 120"

Not  
Illustrated

\* Indicates the part number listed is for reference only. See DESCRIPTION for possible service replacement.

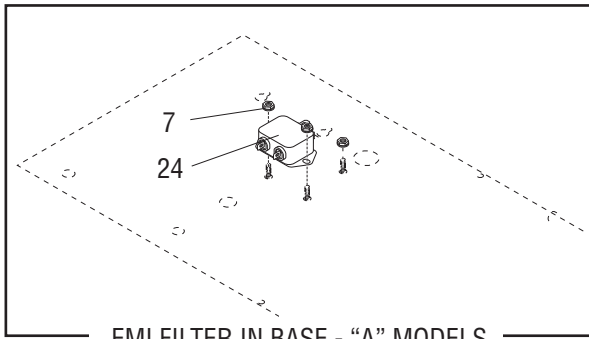


## DISPENSE VALVES AND LINES

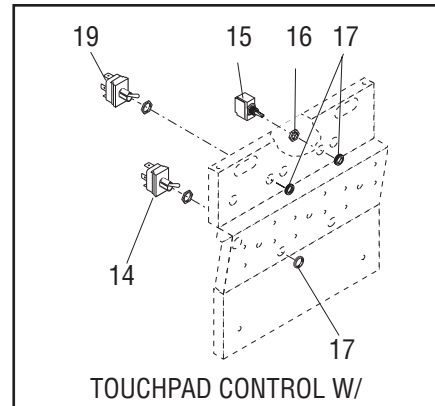
ITEM	PART NO.	QTY.	DESCRIPTION
1	24733.0011	3	O-Ring (One additional used on Models with Hot water valve)
2	26116.0002	3	Valve, Liquid Dispense 120V (See item 14)
	26116.0003	3	Valve, Liquid Dispense 240V (See item 14) (240V & 230V "A" Model dispensers)
	01326.0000	3	Screw, Truss Head #10-32 x .250"
3	32345.0000	1	Valve, Liquid dispense (Models w/hot water valve)
	32345.0001	1	Valve, Liquid dispense (Models w/hot water valve)(230V "A" Model dispensers only)
	01326.0000	1	Screw, Truss Head #10-32 x .250"
4	28526.0001*	1	Tube, Silicone .312" I.D. x .562" O.D. x 18.5" (Order item 13) (Models w/out cold water valve)
	28526.0005*	1	Tube, Silicone .312" I.D. x .562" O.D. x 17.90" (Order item 13) (Models w/cold water valve)
5	28526.0006*	1	Tube, Silicone .312" I.D. x .562" O.D. x 13.5" (Order item 13)
6	28526.0003*	1	Tube, Silicone .312" I.D. x .562" O.D. x 15.75" (Order item 13)
7	28526.0002*	1	Tube, Silicone .312" I.D. x .562" O.D. x 16.0" (Order item 13) (used on Models w/hot water valve)
8	21801.0002	3	Tube, .375" O.D. x 1.50" (One less used on Models w/cold water valve) (One additional used on Models w/hot water valve)
9	12422.0001	3	Clamp, Hose .59"/.66" I.D (One additional used on Models w/cold water valve and hot water valve)
10	25803.0000	3	Water Inlet, Mixing Chamber (One additional used on Models w/hot water valve)
11	32341.0000	1	Tube, Dispense Hot Water (Models w/hot water valve)
12	37970.0000	3	Grommet (One additional used on Models with Hot water valve)
13	28526.1001	-	Tube, Silicone .312" I.D. x .438" O.D. x 36"
	28526.1002	-	Tube, Silicone .312" I.D. x .438" O.D. x 60"
	28526.1003	-	Tube, Silicone .312" I.D. x .438" O.D. x 120"
14	28187.0000	1	Kit, Dispense Valve Diaphragm

} Not  
Illustrated

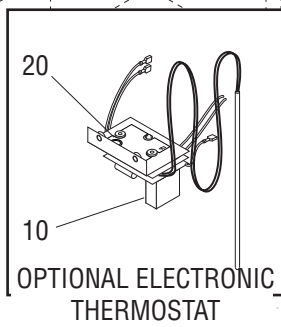
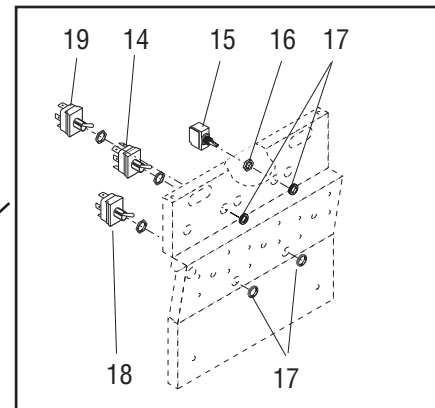
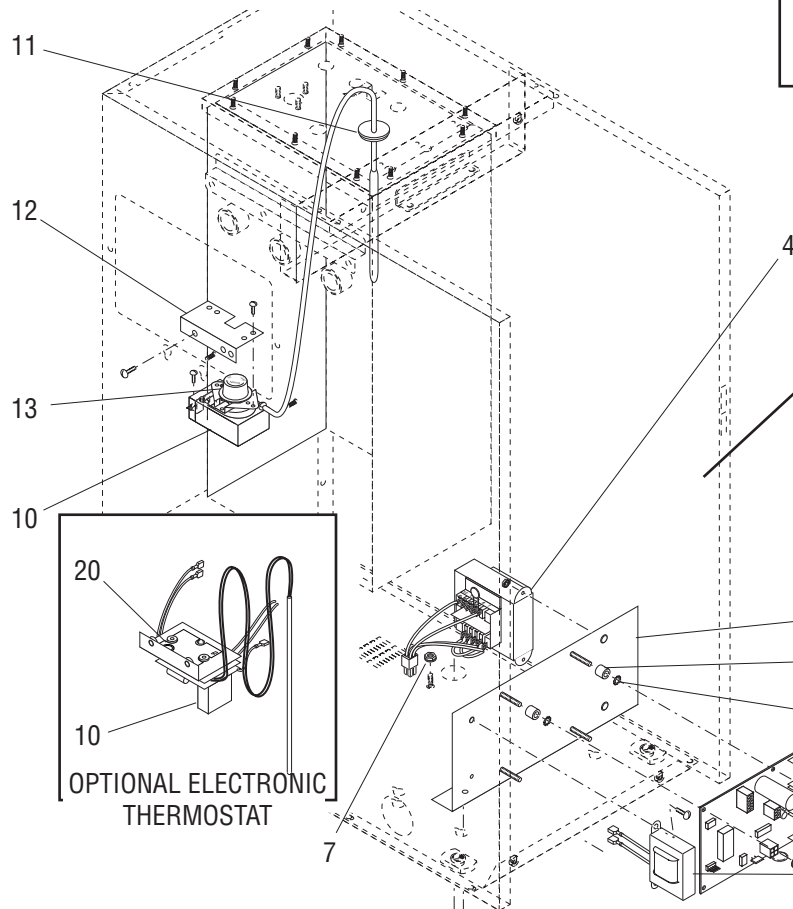
\* Indicates the part number listed is for reference only. See DESCRIPTION for possible service replacement.



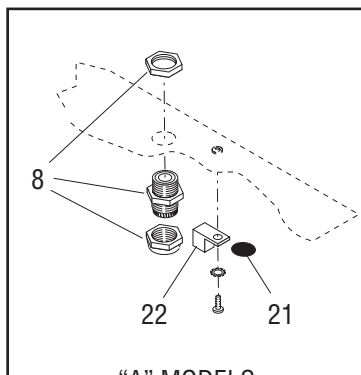
EMI FILTER IN BASE - "A" MODELS



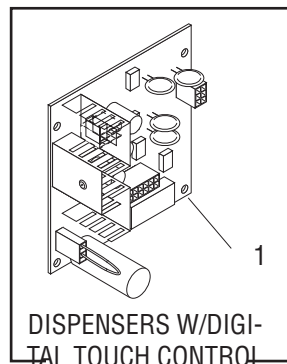
TOUCHPAD CONTROL W/  
HOT WATER



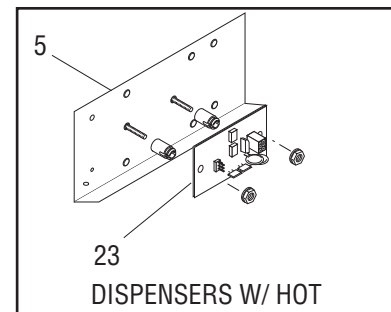
OPTIONAL ELECTRONIC  
THERMOSTAT



"A" MODELS



DISPENSERS W/DIGI-  
TAL TOUCH CONTROL



DISPENSERS W/ HOT  
WATER VALVE

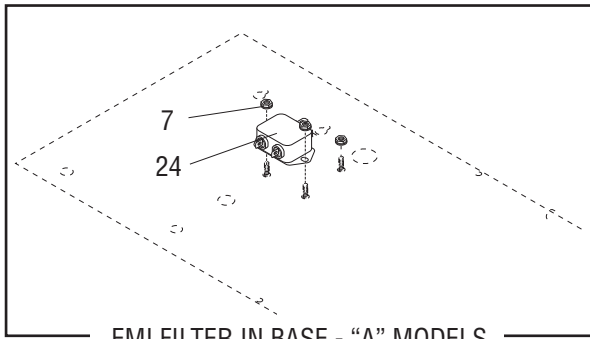
## ELECTRICAL CONTROLS

ITEM	PART NO.	QTY.	DESCRIPTION
1	28855.1000	1	Control Board, 120V & 240V (Dispensers w/out digital touch control)
	28826.1000	1	Control Board (120V & 230V "A" Model dispensers) (Includes item 29) (Dispensers w/digital touch control)
	00973.0000	4	Nut, Keps #6-32
2	00450.0000	4	Spacer, .219" I.D. x .34" LG - Brass
3	01510.0000	4	Lockwasher, External Tooth #6
4	28860.0000	1	Transformer Assy, 120V to 24V
	28860.0001	1	Transformer Assy, 240V to 24V (240V & 230V "A" Model dispensers)
	00973.0000	2	Nut, Keps #6-32
5	28869.0000	1	Bracket, Component Mounting
	01311.0001	2	Screw, Truss Head - Locking #8-32 x .25"
6	00715.0000	1	Adapter Washer, Strain Relief (Not used on 120V, 120/208V or 120/240V dispensers)
7	00970.0000	1	Nut, Keps #8-32
8	01686.0000	1	Bushing, Strain Relief (120V dispensers)
	28683.0000	1	Bushing, Strain Relief (120/208V & 120/240V dispensers)
	05746.0000	1	Bushing, Strain Relief (240V dispensers)
	01666.0000	1	Bushing, Strain Relief (230V "A" Model dispensers)
9	28327.0000	1	Ballast, 120V-60HZ W/Terminals
	28327.0001	1	Ballast, 240V-50HZ W/Terminals (240 & 230V "A" Model dispensers)
	02308.0000	2	Screw, Pan Head - Serrated #8-32 x .375"
10	-----	1	Thermostat Assembly 120V - Mechanical (Not Available. Order Item 31)
	02328.0003	2	Screw, Pan Head #6-32 x .25" (Mounting)
	20762.0000	2	Screw, Binding Head #8-32 x .25" (Terminal)
	26527.1003	1	Thermostat Assembly 120V - Electronic (Includes item 20)
	01311.0000	2	Screw, Truss Head - SST #8-32 x .25"
	01311.0003	2	Screw, Truss Head - BLK #8-32 x .25"
	28367.1000	1	Thermostat Assembly - Electronic (Includes item 20) (230V "A" Model dispensers Only)
	01311.0000	2	Screw, Truss Head - SST #8-32 x .25"
20762.0000	2	Screw, Binding Head #8-32 x .25"	
11	07073.0000	1	Grommet - Mechanical Thermostats
	12570.0000	1	Grommet - Electronic Thermostats
12	28224.0000	1	Bracket, Thermostat Mounting - Mechanical Thermostat
	01311.0003	2	Screw, Truss Head - BLK #8-32 x .25"
	01311.0000	2	Screw, Truss Head - SST #8-32 x .25"
13	00720.0000	1	Knob, Thermostat Adjustment - Mechanical Thermostat
14	28857.0000	1	Switch, Toggle Run/Rinse/Program (Includes item 16, also order item 17) (Dispensers w/out digital touch control)
	02686.0000	1	Switch, Toggle ON/OFF (Includes item 16, also order item 17) (Dispensers w/digital touch control)
15	23522.0000	1	Switch, Toggle ON/OFF-Tank Heater (Includes item 16, also order item 17)
16	23696.0000	4	Nut, Hex .469" - 32
17	23697.0000	4	Nut, Plastic Face .469" - 32
18	28856.0000	1	Switch, Toggle - Increase/Decrease (Includes item 16, also order item 17) (Dispensers w/out digital touch control)

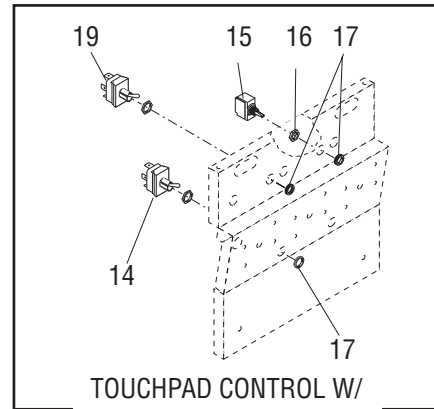
(Continued)

\* Indicates the part number listed is for reference only. See DESCRIPTION for possible service replacement.

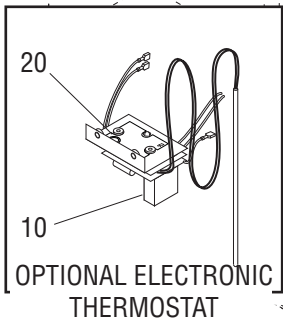
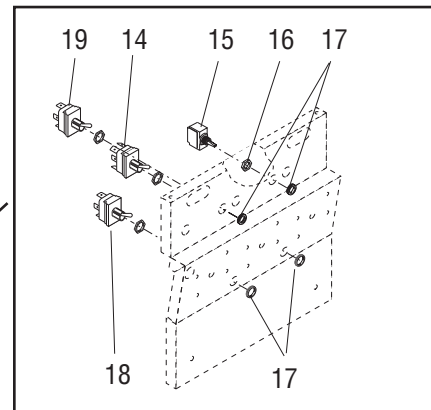
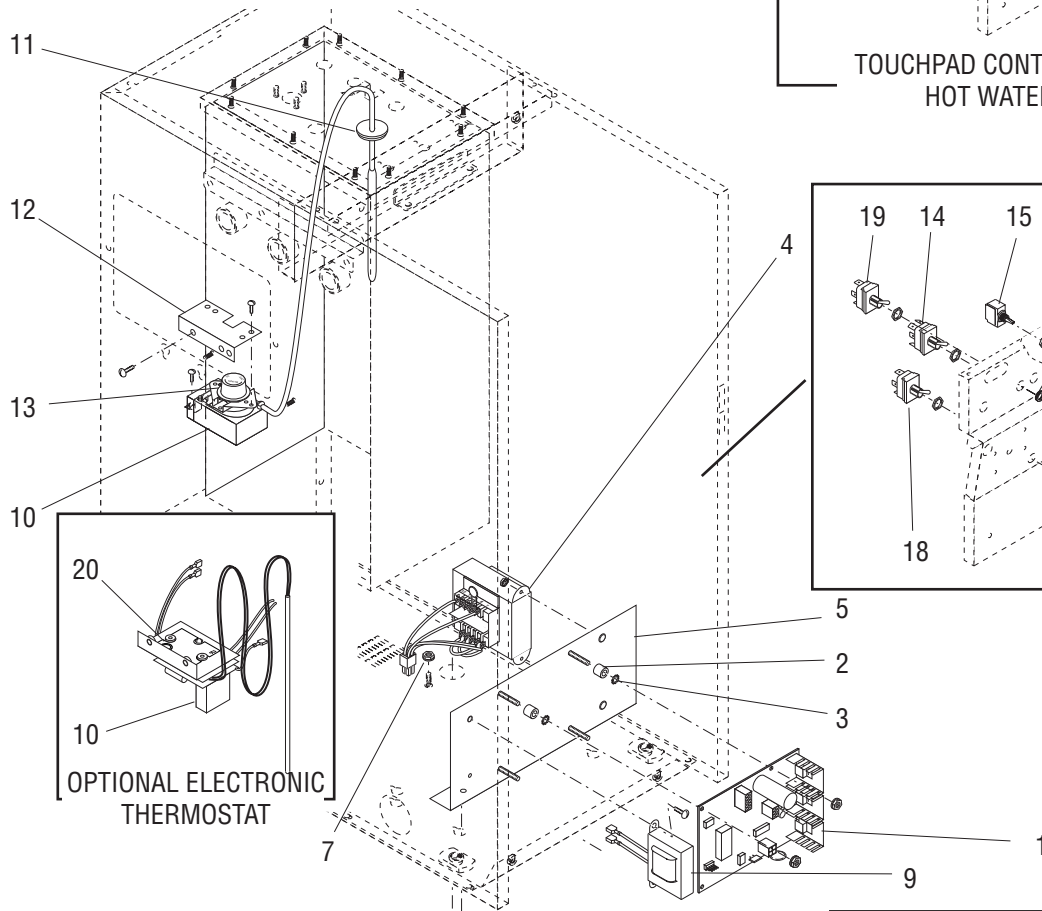
(Continued)



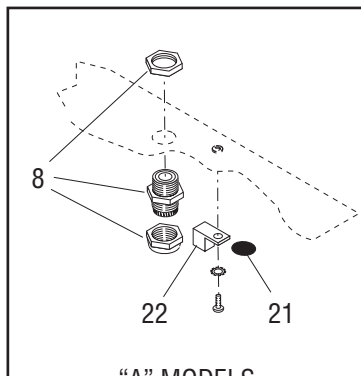
EMI FILTER IN BASE - "A" MODELS



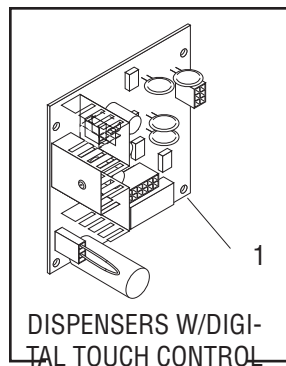
TOUCHPAD CONTROL W/  
HOT WATER



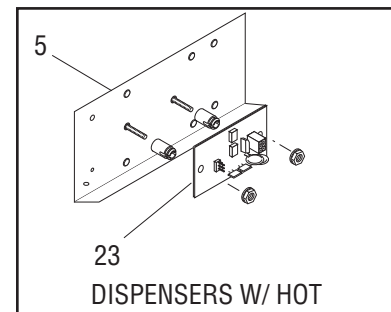
OPTIONAL ELECTRONIC  
THERMOSTAT



"A" MODELS



DISPENSERS W/DIGI-  
TAL TOUCH CONTROL



DISPENSERS W/ HOT  
WATER VALVE



## ELECTRICAL CONTROLS

ITEM	PART NO.	QTY.	DESCRIPTION
19	05761.0001	1	Switch, Toggle ON/ON - Cold Water Valve (Includes item 16, also order item 17)
20	26536.0000	1	Decal - Thermostat Adjustments - Electronic Thermostat
21	00824.0000	1	Decal, Ground
22	27705.0000	1	Terminal Lug, Ground
	01375.0000	1	Screw, Pan Head Brass #10-32 x .50"
	01512.0000	1	Lockwasher, Internal Tooth #10
23	32344.1000	1	Circuit Board, Auxiliary Control (used only on dispensers w/HWV )
	29081.0002	2	Spacer
	00973.0000	2	Nut, Keps #6-32
24	29446.0001	1	EMI Filter, European 10Amp (230V "A" Model dispensers only)
	00970.0000	2	Nut, Keps #8-32
25	20630.0014	1	Cord Assembly, Power 120V
	28680.0001	1	Cord Assembly, Power 120/208V & 120/240V
	27728.0002	1	Cord Assembly, Power 230V
	35155.0000	1	Cord Assembly, Power 240V
26	28548.0000	1	Wiring Harness, Control - 120V & 240V (Dispensers with mechanical thermostat & w/out digital touch control)
	29067.0000	1	Wiring Harness, Control - 120V (Dispensers with mechanical thermostat & w/digital touch control)
	29067.0001	1	Wiring Harness, Control - 120/208V & 120/240V (Dispensers with Hot water valve)
	29067.0006	1	Wiring Harness, Control - 230V (230V "A" Model dispensers) (Dispensers with hot water valve & w/digital touch control)
	28548.0001	1	Wiring Harness, Control - 120/208V & 120/240V (Dispensers w/out digital touch control)
	28548.0002	1	Wiring Harness, Control - 120V & 240V (Dispensers with electronic thermostats and dispensers w/out digital touch control)
27	27605.0000	1	Wiring Harness, Cold Water Valve
28	-----	1	Wiring Harness, Door (See Door, Lamps and Panels)
29	28862.0000	1	Lead Assembly, Jumper (Dispensers w/out cold water valve)
30	02244.0000	1	Jumper, Two Position (Dispensers w/out digital touch control)
	29199.0000	1	Jumper Assembly, Rinse Timer (Dispensers w/digital touch control)
31	28239.0000	-	Thermostat Kit (Includes items 10, 12 & 13)

Not  
Illustrated

\* Indicates the part number listed is for reference only. See DESCRIPTION for possible service replacement.

NUMERICAL INDEX

PART NO.	PAGE NO.	PART NO.	PAGE NO.	PART NO.	PAGE NO.	PART NO.	PAGE NO.
00400.0001	19	03633.0000	17	26116.0003	21	28296.0000	9
00408.0001	19	03803.0000	17	26131.0000	19	28297.0000	15
00425.0000	19	03807.0000	17	26135.0001	19	28298.0000	19
00443.0000	19	03996.0000	7	26135.0002	19	28301.0003	9
00450.0000	23	05515.0000	17	26239.0000	9	28322.0000	9
00459.0000	19	05746.0000	23	26247.0000	13	28325.0000	9
00463.0000	19	05761.0001	25	26356.0000	15	28327.0000	23
00619.0010	5	07073.0000	23	26401.0000	13	28327.0001	23
00619.0011	7	11685.0000	13	26435.0000	13	28330.0000	19
00620.0000	19	11707.0026	19	26435.0001	13	28332.1000	9
00656.0000	7	11707.1000	19	26436.0000	13	28333.0000	13
00713.0000	23	11707.1001	19	26441.0000	13	28335.0000	9
00715.0000	23	11707.1002	19	26442.0000	19	28336.0000	11
00720.0000	23	12422.0000	19	26444.0000	9	28362.0000	9
00824.0000	25	12422.0001	19,21	26449.0000	13	28366.0000	5
00831.0000	7	12517.0001	9	26504.0000	5	28366.1000	7
00908.0000	17	12552.0000	17	26522.0000	7	28366.1001	7
00938.0000	19	12570.0000	23	26523.0000	5,7	28366.1002	7
00942.0000	17	13255.0003	7	26524.0000	5	28367.1000	23
00943.0000	17	20201.0750	17	26527.1003	23	28368.0000	7
00946.0000	17	20201.4151	17	26528.0000	7	28424.1003	13
00970.0000	23,25	20203.0100	17	26536.0000	25	28424.1004	13
00973.0000	23,25	20630.0014	25	26537.0000	11	28425.0000	13
00991.0000	5,9	20762.0000	23	26537.0001	11	28428.1000	15
00991.0002	13	20960.0000	13	26537.0003	11	28428.1002	15
01085.0002	19	21355.0001	13	26661.0000	19	28436.0000	5
01111.0002	19	21357.0000	13	26665.1000	17	28436.0003	5
01311.0000	5,7,13,23	21358.0000	13	26892.0000	9	28436.0004	5
01311.0001	5,7,13,15	21365.0000	13	26940.0002	13	28479.0000	19
01311.0001	17,19,23	21436.0000	7	27298.0000	9	28480.0000	19
01311.0003	7,17,23	21716.0000	9	27605.0000	25	28481.0000	19
01315.0000	19	21801.0002	17,21	27619.0000	9	28526.0000	17
01326.0000	19,21	21814.0016	19	27705.0000	25	28526.0001	21
01375.0000	25	22249.0000	19	27728.0002	25	28526.0002	21
01383.0001	9	22978.0000	17	28061.0000	13	28526.0003	21
01390.0000	9	23164.0002	7	28067.0000	13	28526.0005	21
01501.0000	17	23522.0000	23	28147.1000	9	28526.0006	21
01510.0000	23	23696.0000	23	28147.1002	9	28526.0009	19
01511.0000	13	23697.0000	23	28187.0000	21	28526.1000	17
01512.0000	25	23721.0000	19	28206.0000	7	28526.1001	17,19,21
01522.0000	9	23820.1000	19	28208.1000	15	28526.1002	17,19,21
01532.0000	19	24733.0010	15	28209.1000	5	28526.1003	17,19,21
01570.0000	17	24733.0011	21	28224.0000	23	28543.0000	9
01666.0000	23	25292.0000	9	28239.0000	25	28543.0003	9
01686.0000	23	25732.0000	15	28261.0000	9	28548.0000	25
02244.0000	25	25733.0000	15	28267.0000	5	28548.0001	25
02308.0000	5,17,23	25734.0000	15	28268.0000	5	28548.0002	25
02322.0002	19	25736.0000	15	28270.0000	5	28549.0000	11
02328.0002	9	25743.0000	13	28270.0001	5	28661.1000	5
02328.0003	23	25794.0001	13	28275.0000	19	28661.1002	5
02336.0000	9,15	25803.0000	21	28281.0000	17	28668.0000	7
02434.0009	15	25902.0000	15	28286.0000	13	28670.0000	5
02434.1000	15	25903.0000	13	28292.0000	17	28671.0000	5
02536.0000	17,19	26112.0001	13	28295.0000	15	28680.0001	25
02686.0000	23	26116.0002	21	28295.0001	15	28682.0000	9

NUMERICAL INDEX

PART NO.	PAGE NO.	PART NO.	PAGE NO.	PART NO.	PAGE NO.	PART NO.	PAGE NO.
28683.0000.....	23	34130.0000.....	9				
28684.0000.....	7	35155.0000.....	25				
28826.1000.....	23	37724.1001.....	7				
28833.0000.....	11	37970.0000.....	21				
28833.0001.....	11	37978.1000.....	17				
28855.1000.....	23	37978.1001.....	17				
28856.0000.....	23	38031.0000.....	9				
28857.0000.....	23	38031.0001.....	9				
28860.0000.....	23	38053.0000.....	7				
28860.0001.....	23						
28862.0000.....	25						
28864.0000.....	15						
28865.0000.....	15						
28866.0000.....	15						
28867.0000.....	15						
28869.0000.....	23						
28870.0000.....	9						
28872.0000.....	7						
28874.0000.....	7						
28910.0000.....	7						
29066.0000.....	11						
29066.0001.....	11						
29067.0000.....	25						
29067.0001.....	25						
29067.0006.....	25						
29081.0002.....	25						
29199.0000.....	25						
29216.0000.....	5						
29216.0001.....	5						
29216.0002.....	5						
29218.0000.....	7						
29218.0002.....	7						
29243.0000.....	5						
29243.0001.....	5						
29243.0002.....	5						
29308.0000.....	9						
29329.1000.....	17						
29446.0001.....	25						
29448.0000.....	9						
29642.1001.....	13						
29713.0000.....	13						
29933.1000.....	13						
32306.0000.....	15						
32337.0000.....	13						
32341.0000.....	21						
32344.1000.....	25						
32345.0000.....	21						
32345.0001.....	21						
32383.0000.....	13						
32386.0000.....	13						
32386.0001.....	13						
32394.0000.....	13						
32906.0000.....	15						
33886.0000.....	5						
33886.0001.....	5						